

Casein Antibody

Rabbit mAb

Catalog # AP92274

Product Information

Application	WB, IP
Primary Accession	P47710
Reactivity	Human
Clonality	Monoclonal
Other Names	Casein;
Isotype	Rabbit IgG
Host	Rabbit
Calculated MW	21671

Additional Information

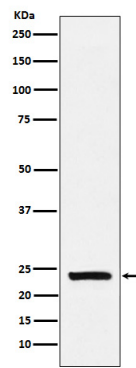
Dilution	WB 1:1000~1:5000 IP 1:50
Purification	Affinity-chromatography
Immunogen	A synthesized peptide derived from human Casein
Description	Important role in the capacity of milk to transport calcium phosphate.
Storage Condition and Buffer	Rabbit IgG in phosphate buffered saline , pH 7.4, 150mM NaCl, 0.02% sodium azide and 50% glycerol. Store at +4°C short term. Store at -20°C long term. Avoid freeze / thaw cycle.

Protein Information

Name	CSN1S1
Synonyms	CASA, CSN1
Function	Important role in the capacity of milk to transport calcium phosphate.
Cellular Location	Secreted.
Tissue Location	Mammary gland specific. Secreted in milk.

Images

Western blot analysis of Casein expression in Human milk lysate.



Please note: All products are 'FOR RESEARCH USE ONLY. NOT FOR USE IN DIAGNOSTIC OR THERAPEUTIC PROCEDURES'.