

Calpain S1 Antibody

Rabbit mAb

Catalog # AP92278

Product Information

Application	WB, IHC, IF, FC, ICC, IHF
Primary Accession	P04632
Reactivity	Rat, Human, Mouse
Clonality	Monoclonal
Other Names	Calpain4; CalpainS1; CANP; CANPS; CAPN 4; CAPN S1; CAPN4; CAPNS 1; CAPNS; Capns1; CDPS; CSS1;
Isotype	Rabbit IgG
Host	Rabbit
Calculated MW	28316

Additional Information

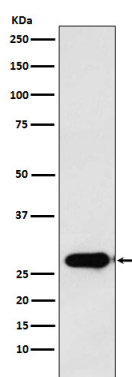
Dilution	WB 1:500~1:2000 IHC 1:50~1:200 ICC/IF 1:50~1:200 FC 1:50
Purification	Affinity-chromatography
Immunogen	A synthesized peptide derived from human Calpain S1
Description	Regulatory subunit of the calcium-regulated non-lysosomal thiol-protease which catalyzes limited proteolysis of substrates involved in cytoskeletal remodeling and signal transduction.
Storage Condition and Buffer	Rabbit IgG in phosphate buffered saline , pH 7.4, 150mM NaCl, 0.02% sodium azide and 50% glycerol. Store at +4°C short term. Store at -20°C long term. Avoid freeze / thaw cycle.

Protein Information

Name	CAPNS1
Synonyms	CAPN4, CAPNS
Function	Regulatory subunit of the calcium-regulated non-lysosomal thiol-protease which catalyzes limited proteolysis of substrates involved in cytoskeletal remodeling and signal transduction. Essential for embryonic development (By similarity).
Cellular Location	Cytoplasm. Cell membrane. Note=Translocates to the plasma membrane upon calcium binding.

Images

Western blot analysis of Calpain S1 expression in T47D



cell lysate.

Please note: All products are 'FOR RESEARCH USE ONLY. NOT FOR USE IN DIAGNOSTIC OR THERAPEUTIC PROCEDURES'.