

PHAPI2 / APRIL Antibody

Rabbit mAb

Catalog # AP92282

Product Information

Application	WB, IHC, IF, FC, ICC, IHF
Primary Accession	Q92688
Reactivity	Rat, Human, Mouse
Clonality	Monoclonal
Other Names	ANP32B; PAL31; PHAPI2; PHAPI2a; Ssp29;
Isotype	Rabbit IgG
Host	Rabbit
Calculated MW	28788

Additional Information

Dilution	WB 1:500~1:1000 IHC 1:50~1:200 ICC/IF 1:50~1:200 FC 1:100
Purification	Affinity-chromatography
Immunogen	A synthesized peptide derived from human PHAPI2 / APRIL
Description	Multifunctional protein working as a cell cycle progression factor as well as a cell survival factor. Required for the progression from the G1 to the S phase.
Storage Condition and Buffer	Rabbit IgG in phosphate buffered saline , pH 7.4, 150mM NaCl, 0.02% sodium azide and 50% glycerol. Store at +4°C short term. Store at -20°C long term. Avoid freeze / thaw cycle.

Protein Information

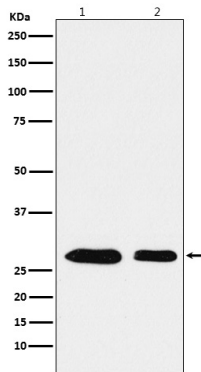
Name	ANP32B
Synonyms	APRIL, PHAPI2
Function	Multifunctional protein that is involved in the regulation of many processes including cell proliferation, apoptosis, cell cycle progression or transcription (PubMed: 18039846 , PubMed: 20015864). Regulates the proliferation of neuronal stem cells, differentiation of leukemic cells and progression from G1 to S phase of the cell cycle. As negative regulator of caspase-3-dependent apoptosis, may act as an antagonist of ANP32A in regulating tissue homeostasis (PubMed: 20015864). Exhibits histone chaperone properties, able to recruit histones to certain promoters, thus regulating the transcription of specific genes (PubMed: 18039846 , PubMed: 20538007). Also plays an essential role in the nucleocytoplasmic transport of specific mRNAs via the uncommon nuclear mRNA export receptor XPO1/CRM1 (PubMed: 17178712). Participates in the regulation of adequate adaptive immune responses by acting on mRNA expression and cell proliferation (By similarity).
Cellular Location	[Isoform 1]: Nucleus. Cytoplasm Note=Accumulates in the nuclei at the S

phase.

Tissue Location

Expressed in heart, lung, pancreas, prostate and in spleen, thymus and placenta.

Images



Western blot analysis of PHAPI2 / APRIL expression in (1) Jurkat cell lysate; (2) RAW264.7 cell lysate.

Please note: All products are 'FOR RESEARCH USE ONLY. NOT FOR USE IN DIAGNOSTIC OR THERAPEUTIC PROCEDURES'.