

# TCF21 Antibody

Rabbit mAb

Catalog # AP92284

## Product Information

---

<b>Application</b>	WB, FC, IP
<b>Primary Accession</b>	<a href="#">O43680</a>
<b>Reactivity</b>	Human
<b>Clonality</b>	Monoclonal
<b>Other Names</b>	Capsulin; Epicardin; POD 1; POD1; TCF-21; tcf21;
<b>Isotype</b>	Rabbit IgG
<b>Host</b>	Rabbit
<b>Calculated MW</b>	19715

## Additional Information

---

<b>Dilution</b>	WB 1:500~1:2000 IP 1:60 FC 1:80
<b>Purification</b>	Affinity-chromatography
<b>Immunogen</b>	A synthesized peptide derived from human TCF21
<b>Description</b>	Involved in epithelial-mesenchymal interactions in kidney and lung morphogenesis that include epithelial differentiation and branching morphogenesis. May play a role in the specification or differentiation of one or more subsets of epicardial cell types.
<b>Storage Condition and Buffer</b>	Rabbit IgG in phosphate buffered saline , pH 7.4, 150mM NaCl, 0.02% sodium azide and 50% glycerol. Store at +4°C short term. Store at -20°C long term. Avoid freeze / thaw cycle.

## Protein Information

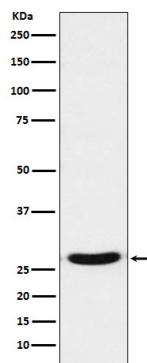
---

<b>Name</b>	TCF21
<b>Synonyms</b>	BHLHA23, POD1
<b>Function</b>	Involved in epithelial-mesenchymal interactions in kidney and lung morphogenesis that include epithelial differentiation and branching morphogenesis. May play a role in the specification or differentiation of one or more subsets of epicardial cell types.
<b>Cellular Location</b>	Nucleus.

## Images

---

Western blot analysis of TCF21 expression in 293 cell lysate.



Please note: All products are 'FOR RESEARCH USE ONLY. NOT FOR USE IN DIAGNOSTIC OR THERAPEUTIC PROCEDURES'.