

ABCE1 Antibody

Rabbit mAb

Catalog # AP92290

Product Information

Application	WB, IHC, IF, FC, ICC, IP, IHF
Primary Accession	P61221
Reactivity	Rat, Human, Mouse
Clonality	Monoclonal
Other Names	ABC38; ABCE1; HuHP68; OABP; RLI; RNASEL1; RNASELI; RNS4I;
Isotype	Rabbit IgG
Host	Rabbit
Calculated MW	67314

Additional Information

Dilution	WB 1:500~1:2000 IHC 1:50~1:200 ICC/IF 1:50~1:200 IP 1:50 FC 1:100
Purification	Affinity-chromatography
Immunogen	A synthesized peptide derived from human ABCE1
Description	Antagonizes the binding of 2-5A (5'-phosphorylated 2',5'-linked oligoadenylates) by RNase L through direct interaction with RNase L and therefore inhibits its endoribonuclease activity.
Storage Condition and Buffer	Rabbit IgG in phosphate buffered saline , pH 7.4, 150mM NaCl, 0.02% sodium azide and 50% glycerol. Store at +4°C short term. Store at -20°C long term. Avoid freeze / thaw cycle.

Protein Information

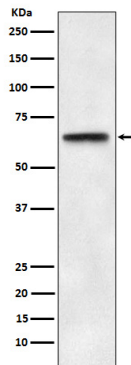
Name	ABCE1
Synonyms	RLI, RNASEL1, RNASELI, RNS4I
Function	Nucleoside-triphosphatase (NTPase) involved in ribosome recycling by mediating ribosome disassembly (PubMed: 20122402 , PubMed: 21448132). Able to hydrolyze ATP, GTP, UTP and CTP (PubMed: 20122402). Splits ribosomes into free 60S subunits and tRNA- and mRNA-bound 40S subunits (PubMed: 20122402 , PubMed: 21448132). Acts either after canonical termination facilitated by release factors (ETF1/eRF1) or after recognition of stalled and vacant ribosomes by mRNA surveillance factors (PELO/Pelota) (PubMed: 20122402 , PubMed: 21448132). Involved in the No-Go Decay (NGD) pathway: recruited to stalled ribosomes by the Pelota-HBS1L complex, and drives the disassembly of stalled ribosomes, followed by degradation of damaged mRNAs as part of the NGD pathway (PubMed: 21448132). Also plays a role in quality control of translation of mitochondrial outer membrane-localized mRNA (PubMed: 29861391). As part of the PINK1-regulated signaling, ubiquitinated by CNOT4 upon mitochondria damage; this modification

generates polyubiquitin signals that recruit autophagy receptors to the mitochondrial outer membrane and initiate mitophagy (PubMed:[29861391](#)). RNASEL-specific protein inhibitor which antagonizes the binding of 2-5A (5'-phosphorylated 2',5'-linked oligoadenylates) to RNASEL (PubMed:[9660177](#)). Negative regulator of the anti-viral effect of the interferon-regulated 2-5A/RNASEL pathway (PubMed:[11585831](#), PubMed:[9660177](#), PubMed:[9847332](#)).

Cellular Location

Cytoplasm. Mitochondrion

Images



Western blot analysis of ABCE1 expression in HeLa cell lysate.

Please note: All products are 'FOR RESEARCH USE ONLY. NOT FOR USE IN DIAGNOSTIC OR THERAPEUTIC PROCEDURES'.