

Cyclophilin 40 Antibody

Rabbit mAb

Catalog # AP92292

Product Information

Application	WB, IHC, IF, FC, ICC, IHF
Primary Accession	Q08752
Reactivity	Rat, Human, Mouse
Clonality	Monoclonal
Other Names	Cyclophilin40; CyclophilinD; CYP40; CYPD; PPIase; PPIase D; Ppid; Rotamase; Rotamase D;
Isotype	Rabbit IgG
Host	Rabbit
Calculated MW	40764

Additional Information

Dilution	WB 1:1000~1:5000 IHC 1:50~1:200 ICC/IF 1:50~1:200 FC 1:50
Purification	Affinity-chromatography
Immunogen	A synthesized peptide derived from human Cyclophilin 40
Description	PPIases accelerate the folding of proteins. It catalyzes the cis-trans isomerization of proline imidic peptide bonds in oligopeptides.
Storage Condition and Buffer	Rabbit IgG in phosphate buffered saline , pH 7.4, 150mM NaCl, 0.02% sodium azide and 50% glycerol. Store at +4°C short term. Store at -20°C long term. Avoid freeze / thaw cycle.

Protein Information

Name	PPID (HGNC:9257)
Synonyms	CYP40, CYPD
Function	PPIase that catalyzes the cis-trans isomerization of proline imidic peptide bonds in oligopeptides and may therefore assist protein folding (PubMed: 11350175 , PubMed: 20676357). Proposed to act as a co- chaperone in HSP90 complexes such as in unligated steroid receptors heterocomplexes. Different co-chaperones seem to compete for association with HSP90 thus establishing distinct HSP90-co-chaperone- receptor complexes with the potential to exert tissue-specific receptor activity control. May have a preference for estrogen receptor complexes and is not found in glucocorticoid receptor complexes. May be involved in cytoplasmic dynein-dependent movement of the receptor from the cytoplasm to the nucleus. May regulate MYB by inhibiting its DNA- binding activity. Involved in regulation of AHR signaling by promoting the formation of the AHR:ARNT dimer; the function is independent of HSP90 but requires the chaperone activity. Involved in regulation of UV radiation-induced apoptosis. Promotes

cell viability in anaplastic lymphoma kinase-positive anaplastic large-cell lymphoma (ALK+ ALCL) cell lines.

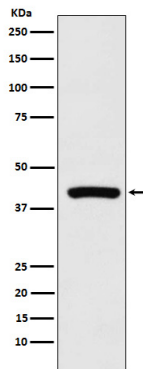
Cellular Location

Cytoplasm. Nucleus, nucleolus. Nucleus, nucleoplasm

Tissue Location

Widely expressed.

Images



Western blot analysis of Cyclophilin 40 expression in K562 cell lysate.

Please note: All products are 'FOR RESEARCH USE ONLY. NOT FOR USE IN DIAGNOSTIC OR THERAPEUTIC PROCEDURES'.