

VPS18 Antibody

Rabbit mAb

Catalog # AP92294

Product Information

Application	WB, IF, FC, ICC
Primary Accession	Q9P253
Reactivity	Rat, Human, Mouse
Clonality	Monoclonal
Other Names	hVPS18; PEP3; vps18;
Isotype	Rabbit IgG
Host	Rabbit
Calculated MW	110186

Additional Information

Dilution	WB 1:500~1:2000 ICC/IF 1:50~1:200 FC 1:50
Purification	Affinity-chromatography
Immunogen	A synthesized peptide derived from human VPS18
Description	May play a role in vesicle-mediated protein trafficking to lysosomal compartments and in membrane docking/fusion reactions of late endosomes/lysosomes.
Storage Condition and Buffer	Rabbit IgG in phosphate buffered saline , pH 7.4, 150mM NaCl, 0.02% sodium azide and 50% glycerol. Store at +4°C short term. Store at -20°C long term. Avoid freeze / thaw cycle.

Protein Information

Name	VPS18 (HGNC:15972)
Synonyms	KIAA1475
Function	Plays a role in vesicle-mediated protein trafficking to lysosomal compartments including the endocytic membrane transport and autophagic pathways. Believed to act as a core component of the putative HOPS and CORVET endosomal tethering complexes which are proposed to be involved in the Rab5-to-Rab7 endosome conversion probably implicating MON1A/B, and via binding SNAREs and SNARE complexes to mediate tethering and docking events during SNARE-mediated membrane fusion. The HOPS complex is proposed to be recruited to Rab7 on the late endosomal membrane and to regulate late endocytic, phagocytic and autophagic traffic towards lysosomes. The CORVET complex is proposed to function as a Rab5 effector to mediate early endosome fusion probably in specific endosome subpopulations (PubMed: 11382755 , PubMed: 23351085 , PubMed: 24554770 , PubMed: 25783203). Required for fusion of endosomes and autophagosomes with lysosomes (PubMed: 25783203). Involved in dendrite development of

Pukinje cells (By similarity).

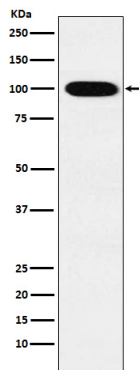
Cellular Location

Late endosome membrane; Peripheral membrane protein; Cytoplasmic side. Lysosome membrane; Peripheral membrane protein; Cytoplasmic side. Early endosome Cytoplasmic vesicle, autophagosome. Cytoplasmic vesicle, clathrin-coated vesicle. Note=Cytoplasmic, peripheral membrane protein associated with early endosomes and late endosomes/lysosomes

Tissue Location

Ubiquitous. Expression was highest in heart and low in lung.

Images



Western blot analysis of VPS18 expression in K562 cell lysate.

Please note: All products are 'FOR RESEARCH USE ONLY. NOT FOR USE IN DIAGNOSTIC OR THERAPEUTIC PROCEDURES'.