

POLR2C Antibody

Rabbit mAb

Catalog # AP92295

Product Information

Application	WB, IHC
Primary Accession	P19387
Reactivity	Rat, Human, Mouse
Clonality	Monoclonal
Other Names	hRPB33; hsRPB3; Polr2c; RPB3; RPB31; RPB33;
Isotype	Rabbit IgG
Host	Rabbit
Calculated MW	31441

Additional Information

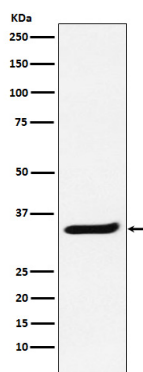
Dilution	WB 1:1000~1:5000 IHC 1:50~1:200
Purification	Affinity-chromatography
Immunogen	A synthesized peptide derived from human POLR2C
Description	DNA-dependent RNA polymerase catalyzes the transcription of DNA into RNA using the four ribonucleoside triphosphates as substrates. Component of RNA polymerase II which synthesizes mRNA precursors and many functional non-coding RNAs.
Storage Condition and Buffer	Rabbit IgG in phosphate buffered saline , pH 7.4, 150mM NaCl, 0.02% sodium azide and 50% glycerol. Store at +4°C short term. Store at -20°C long term. Avoid freeze / thaw cycle.

Protein Information

Name	POLR2C (HGNC:9189)
Function	Core component of RNA polymerase II (Pol II), a DNA-dependent RNA polymerase which synthesizes mRNA precursors and many functional non-coding RNAs using the four ribonucleoside triphosphates as substrates.
Cellular Location	Nucleus.

Images

Western blot analysis of POLR2C expression in Jurkat cell lysate.



Please note: All products are 'FOR RESEARCH USE ONLY. NOT FOR USE IN DIAGNOSTIC OR THERAPEUTIC PROCEDURES'.