

# MAD1 Antibody

Rabbit mAb

Catalog # AP92296

## Product Information

<b>Application</b>	WB
<b>Primary Accession</b>	<a href="#">Q9Y6D9</a>
<b>Reactivity</b>	Rat, Human, Mouse
<b>Clonality</b>	Monoclonal
<b>Other Names</b>	hMAD1; HsMAD1; MAD1; MAD1L1; PIG9; TP53I9; TXBP181;
<b>Isotype</b>	Rabbit IgG
<b>Host</b>	Rabbit
<b>Calculated MW</b>	83067

## Additional Information

<b>Dilution</b>	WB 1:500~1:2000
<b>Purification</b>	Affinity-chromatography
<b>Immunogen</b>	A synthesized peptide derived from human MAD1
<b>Description</b>	Component of the spindle-assembly checkpoint that prevents the onset of anaphase until all chromosomes are properly aligned at the metaphase plate.
<b>Storage Condition and Buffer</b>	Rabbit IgG in phosphate buffered saline , pH 7.4, 150mM NaCl, 0.02% sodium azide and 50% glycerol. Store at +4°C short term. Store at -20°C long term. Avoid freeze / thaw cycle.

## Protein Information

<b>Name</b>	MAD1L1
<b>Synonyms</b>	MAD1, TXBP181
<b>Function</b>	Component of the spindle-assembly checkpoint that prevents the onset of anaphase until all chromosomes are properly aligned at the metaphase plate (PubMed: <a href="#">10049595</a> , PubMed: <a href="#">20133940</a> , PubMed: <a href="#">29162720</a> ). Forms a heterotetrameric complex with the closed conformation form of MAD2L1 (C-MAD2) at unattached kinetochores during prometaphase, recruits an open conformation of MAD2L1 (O-MAD2) and promotes the conversion of O-MAD2 to C-MAD2, which ensures mitotic checkpoint signaling (PubMed: <a href="#">29162720</a> ).
<b>Cellular Location</b>	Nucleus. Chromosome, centromere, kinetochore. Nucleus envelope Cytoplasm, cytoskeleton, microtubule organizing center, centrosome. Cytoplasm, cytoskeleton, spindle. Cytoplasm, cytoskeleton, spindle pole. Note=Co- localizes with TPR at the nucleus envelope during interphase and throughout the cell cycle (PubMed:18981471, PubMed:22351768). From the beginning to the end of mitosis, it is seen to move from a diffusely nuclear distribution to the centrosome, to the spindle midzone and finally to the

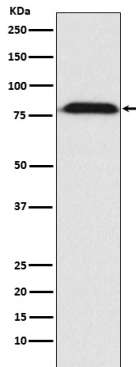
midbody (PubMed:9546394). Localizes to kinetochores during prometaphase (PubMed:22351768, PubMed:29162720). Does not localize to kinetochores during metaphase (PubMed:29162720) Colocalizes with NEK2 at the kinetochore (PubMed:14978040). Colocalizes with IK at spindle poles during metaphase and anaphase (PubMed:22351768).

#### Tissue Location

[Isoform 1]: Expressed in hepatocellular carcinomas and hepatoma cell lines (at protein level)

## Images

---



Western blot analysis of MAD1 expression in A431 cell lysate.

Please note: All products are 'FOR RESEARCH USE ONLY. NOT FOR USE IN DIAGNOSTIC OR THERAPEUTIC PROCEDURES'.