

CDKN2C Antibody

Rabbit mAb

Catalog # AP92303

Product Information

Application	WB, IHC, IF, ICC, IP, IHF
Primary Accession	P42773
Reactivity	Rat, Human, Mouse
Clonality	Monoclonal
Other Names	Cdkn2c; CDKN6; INK4C; p18; p18 inhibits CDK4; p18 INK4c; p18 INK6; p18-INK4c; p18-INK6;
Isotype	Rabbit IgG
Host	Rabbit
Calculated MW	18127

Additional Information

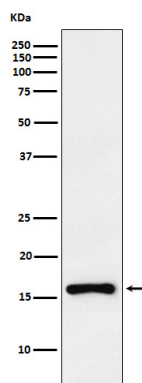
Dilution	WB 1:500~1:2000 IHC 1:50~1:200 ICC/IF 1:50~1:200 IP 1:40
Purification	Affinity-chromatography
Immunogen	A synthesized peptide derived from human CDKN2C
Description	Interacts strongly with CDK6, weakly with CDK4. Inhibits cell growth and proliferation with a correlated dependence on endogenous retinoblastoma protein RB.
Storage Condition and Buffer	Rabbit IgG in phosphate buffered saline , pH 7.4, 150mM NaCl, 0.02% sodium azide and 50% glycerol. Store at +4°C short term. Store at -20°C long term. Avoid freeze / thaw cycle.

Protein Information

Name	CDKN2C
Synonyms	CDKN6
Function	Interacts strongly with CDK6, weakly with CDK4. Inhibits cell growth and proliferation with a correlated dependence on endogenous retinoblastoma protein RB.
Tissue Location	Highest levels found in skeletal muscle. Also found in pancreas and heart

Images

Western blot analysis of CDKN2C expression in Ramos cell lysate.



Please note: All products are 'FOR RESEARCH USE ONLY. NOT FOR USE IN DIAGNOSTIC OR THERAPEUTIC PROCEDURES'.