

# IDH1 Antibody

Rabbit mAb

Catalog # AP92314

## Product Information

<b>Application</b>	WB, IHC, IP
<b>Primary Accession</b>	<a href="#">O75874</a>
<b>Reactivity</b>	Rat, Human, Mouse
<b>Clonality</b>	Monoclonal
<b>Other Names</b>	HEL-216; HEL-S-26; ICDH; IDCD; IDH; IDH1; IDP; IDPC; PICD;
<b>Isotype</b>	Rabbit IgG
<b>Host</b>	Rabbit
<b>Calculated MW</b>	46659

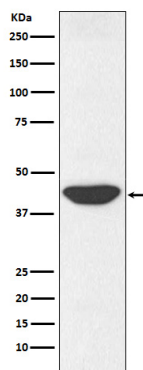
## Additional Information

<b>Dilution</b>	WB 1:500~1:2000 IHC 1:50~1:200 IP 1:50
<b>Purification</b>	Affinity-chromatography
<b>Immunogen</b>	A synthesized peptide derived from human IDH1
<b>Description</b>	Genetic variations are associated with cartilaginous tumors such as enchondroma or chondrosarcoma. Mutations of Arg-132 to Cys, Gly or His abolish the conversion of isocitrate to alpha-ketoglutarate. Instead, alpha-ketoglutarate is converted to R(-)-2-hydroxyglutarate.
<b>Storage Condition and Buffer</b>	Rabbit IgG in phosphate buffered saline , pH 7.4, 150mM NaCl, 0.02% sodium azide and 50% glycerol. Store at +4°C short term. Store at -20°C long term. Avoid freeze / thaw cycle.

## Protein Information

<b>Name</b>	IDH1
<b>Synonyms</b>	PICD
<b>Function</b>	Catalyzes the NADP(+)-dependent oxidative decarboxylation of isocitrate (D-threo-isocitrate) to 2-ketoglutarate (2-oxoglutarate), which is required by other enzymes such as the phytanoyl-CoA dioxygenase (PubMed: <a href="#">10521434</a> , PubMed: <a href="#">19935646</a> ). Plays a critical role in the generation of NADPH, an important cofactor in many biosynthesis pathways (PubMed: <a href="#">10521434</a> ). May act as a corneal epithelial crystallin and may be involved in maintaining corneal epithelial transparency (By similarity).
<b>Cellular Location</b>	Cytoplasm, cytosol. Peroxisome

## Images



Western blot analysis of IDH1 expression in HepG2 cell lysate.

Please note: All products are 'FOR RESEARCH USE ONLY. NOT FOR USE IN DIAGNOSTIC OR THERAPEUTIC PROCEDURES'.