

AMHR2 Antibody

Rabbit mAb

Catalog # AP92322

Product Information

Application	WB
Primary Accession	Q16671
Reactivity	Human, Mouse
Clonality	Monoclonal
Other Names	AMHR; AMHR2; MISR2; MISRII; MRII;
Isotype	Rabbit IgG
Host	Rabbit
Calculated MW	62750

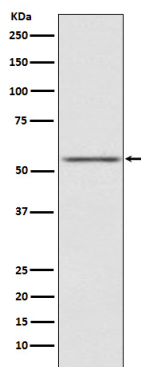
Additional Information

Dilution	WB 1:500~1:2000
Purification	Affinity-chromatography
Immunogen	A synthesized peptide derived from human AMHR2
Description	On ligand binding, forms a receptor complex consisting of two type II and two type I transmembrane serine/threonine kinases. Type II receptors phosphorylate and activate type I receptors which autophosphorylate, then bind and activate SMAD transcriptional regulators. Receptor for anti-Muellerian hormone.
Storage Condition and Buffer	Rabbit IgG in phosphate buffered saline , pH 7.4, 150mM NaCl, 0.02% sodium azide and 50% glycerol. Store at +4°C short term. Store at -20°C long term. Avoid freeze / thaw cycle.

Protein Information

Name	AMHR2
Synonyms	AMHR, MISR2
Function	On ligand binding, forms a receptor complex consisting of two type II and two type I transmembrane serine/threonine kinases. Type II receptors phosphorylate and activate type I receptors which autophosphorylate, then bind and activate SMAD transcriptional regulators. Receptor for anti-Muellerian hormone.
Cellular Location	Membrane; Single-pass type I membrane protein.

Images



Western blot analysis of AMHR2 expression in SK-OV-3 cell lysate.

Please note: All products are 'FOR RESEARCH USE ONLY. NOT FOR USE IN DIAGNOSTIC OR THERAPEUTIC PROCEDURES'.