

CRYAA Antibody

Rabbit mAb

Catalog # AP92323

Product Information

Application	WB, IF, ICC
Primary Accession	P02489
Reactivity	Rat, Human, Mouse
Clonality	Monoclonal
Other Names	Acry 1; CRYA1; CRYAA; HspB4;
Isotype	Rabbit IgG
Host	Rabbit
Calculated MW	19909

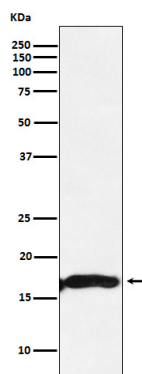
Additional Information

Dilution	WB 1:500~1:2000 ICC/IF 1:50~1:200
Purification	Affinity-chromatography
Immunogen	A synthesized peptide derived from human CRYAA
Description	May contribute to the transparency and refractive index of the lens.
Storage Condition and Buffer	Rabbit IgG in phosphate buffered saline , pH 7.4, 150mM NaCl, 0.02% sodium azide and 50% glycerol. Store at +4°C short term. Store at -20°C long term. Avoid freeze / thaw cycle.

Protein Information

Name	CRYAA
Synonyms	CRYA1, HSPB4
Function	Contributes to the transparency and refractive index of the lens (PubMed: 18302245). In its oxidized form (absence of intramolecular disulfide bond), acts as a chaperone, preventing aggregation of various proteins under a wide range of stress conditions (PubMed: 18199971 , PubMed: 19595763 , PubMed: 22120592 , PubMed: 31792453). Required for the correct formation of lens intermediate filaments as part of a complex composed of BFSP1, BFSP2 and CRYAA (PubMed: 28935373).
Cellular Location	Cytoplasm. Nucleus. Note=Translocates to the nucleus during heat shock and resides in sub-nuclear structures known as SC35 speckles or nuclear splicing speckles
Tissue Location	Expressed in the eye lens (at protein level).

Images



Western blot analysis of CRYAA expression in Mouse eyeball lysate.

Please note: All products are 'FOR RESEARCH USE ONLY. NOT FOR USE IN DIAGNOSTIC OR THERAPEUTIC PROCEDURES'.