

ATP1B1 Antibody

Rabbit mAb

Catalog # AP92325

Product Information

Application	WB, IHC
Primary Accession	P05026
Reactivity	Rat, Human, Mouse
Clonality	Monoclonal
Other Names	Adenosinetriphosphatase; ATP1B; ATP1B1; Atpb 1; ATPBS;
Isotype	Rabbit IgG
Host	Rabbit
Calculated MW	35061

Additional Information

Dilution	WB 1:500~1:2000 IHC 1:50~1:200
Purification	Affinity-chromatography
Immunogen	A synthesized peptide derived from human ATP1B1
Description	This is the non-catalytic component of the active enzyme, which catalyzes the hydrolysis of ATP coupled with the exchange of Na(+) and K(+) ions across the plasma membrane. The beta subunit regulates, through assembly of alpha/beta heterodimers, the number of sodium pumps transported to the plasma membrane.
Storage Condition and Buffer	Rabbit IgG in phosphate buffered saline , pH 7.4, 150mM NaCl, 0.02% sodium azide and 50% glycerol. Store at +4°C short term. Store at -20°C long term. Avoid freeze / thaw cycle.

Protein Information

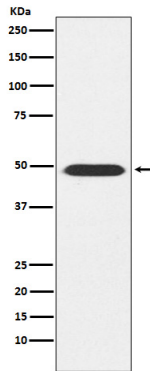
Name	ATP1B1
Synonyms	ATP1B
Function	This is the non-catalytic component of the active enzyme, which catalyzes the hydrolysis of ATP coupled with the exchange of Na(+) and K(+) ions across the plasma membrane. The beta subunit regulates, through assembly of alpha/beta heterodimers, the number of sodium pumps transported to the plasma membrane (PubMed: 19694409). Plays a role in innate immunity by enhancing virus-triggered induction of interferons (IFNs) and interferon stimulated genes (ISGs). Mechanistically, enhances the ubiquitination of TRAF3 and TRAF6 as well as the phosphorylation of TAK1 and TBK1 (PubMed: 34011520).
Cellular Location	Cell membrane; Single-pass type II membrane protein. Apical cell membrane {ECO:0000250 UniProtKB:P07340}; Single-pass type II membrane protein.

Cell membrane, sarcolemma {ECO:0000250|UniProtKB:P14094}.
Note=Colocalizes with OBSCN at the intercalated disk and sarcolemma in cardiomyocytes. Localizes in long striations at the level of Z and M lines {ECO:0000250|UniProtKB:P14094}

Tissue Location

Found in most tissues.

Images



Western blot analysis of ATP1B1 expression in Mouse brain lysate.

Please note: All products are 'FOR RESEARCH USE ONLY. NOT FOR USE IN DIAGNOSTIC OR THERAPEUTIC PROCEDURES'.