

MDH1 Antibody

Rabbit mAb

Catalog # AP92328

Product Information

Application	WB, IF, FC, ICC, IP
Primary Accession	P40925
Reactivity	Rat, Human, Mouse
Clonality	Monoclonal
Other Names	MDH s; mdh1; MDHA; MDHs; MOR2;
Isotype	Rabbit IgG
Host	Rabbit
Calculated MW	36426

Additional Information

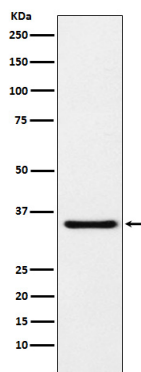
Dilution	WB 1:1000~1:5000 ICC/IF 1:50~1:200 IP 1:50 FC 1:30
Purification	Affinity-chromatography
Immunogen	A synthesized peptide derived from human MDH1
Description	Belongs to the LDH/MDH superfamily. MDH type 2 family.
Storage Condition and Buffer	Rabbit IgG in phosphate buffered saline , pH 7.4, 150mM NaCl, 0.02% sodium azide and 50% glycerol. Store at +4°C short term. Store at -20°C long term. Avoid freeze / thaw cycle.

Protein Information

Name	MDH1 {ECO:0000303 PubMed:34012073, ECO:0000312 HGNC:HGNC:6970}
Function	Catalyzes the reduction of aromatic alpha-keto acids in the presence of NADH (PubMed: 2449162 , PubMed: 3052244). Plays essential roles in the malate-aspartate shuttle and the tricarboxylic acid cycle, important in mitochondrial NADH supply for oxidative phosphorylation (PubMed: 31538237). Catalyzes the reduction of 2-oxoglutarate to 2-hydroxyglutarate, leading to elevated reactive oxygen species (ROS) (PubMed: 34012073).
Cellular Location	Cytoplasm, cytosol.

Images

Western blot analysis of MDH1 expression in HeLa cell lysate.



Please note: All products are 'FOR RESEARCH USE ONLY. NOT FOR USE IN DIAGNOSTIC OR THERAPEUTIC PROCEDURES'.