

ROR2 Antibody

Rabbit mAb

Catalog # AP92335

Product Information

Application	WB, IF, FC, ICC
Primary Accession	Q01974
Reactivity	Human
Clonality	Monoclonal
Other Names	BDB; BDB1; NTRKR2; ROR2;
Isotype	Rabbit IgG
Host	Rabbit
Calculated MW	104757

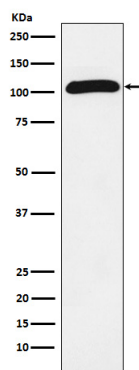
Additional Information

Dilution	WB 1:500~1:2000 ICC/IF 1:50~1:200 FC 1:50
Purification	Affinity-chromatography
Immunogen	A synthesized peptide derived from human ROR2
Description	Tyrosine-protein kinase receptor which may be involved in the early formation of the chondrocytes. It seems to be required for cartilage and growth plate development. Phosphorylates YWHAB, leading to induction of osteogenesis and bone formation.
Storage Condition and Buffer	Rabbit IgG in phosphate buffered saline , pH 7.4, 150mM NaCl, 0.02% sodium azide and 50% glycerol. Store at +4°C short term. Store at -20°C long term. Avoid freeze / thaw cycle.

Protein Information

Name	ROR2
Synonyms	NTRKR2
Function	Tyrosine-protein kinase receptor which may be involved in the early formation of the chondrocytes. It seems to be required for cartilage and growth plate development (By similarity). Phosphorylates YWHAB, leading to induction of osteogenesis and bone formation (PubMed: 17717073). In contrast, has also been shown to have very little tyrosine kinase activity in vitro. May act as a receptor for wnt ligand WNT5A which may result in the inhibition of WNT3A-mediated signaling (PubMed: 25029443).
Cellular Location	Cell membrane; Single-pass type I membrane protein

Images



Western blot analysis of ROR2 expression in Saos-2 cell lysate.

Please note: All products are 'FOR RESEARCH USE ONLY. NOT FOR USE IN DIAGNOSTIC OR THERAPEUTIC PROCEDURES'.