

Granulin Antibody

Rabbit mAb

Catalog # AP92340

Product Information

Application	WB, IHC, IF, FC, ICC, IP, IHF
Primary Accession	P28799
Reactivity	Human
Clonality	Monoclonal
Other Names	Acrogranin; CLN11; GEP; GP88; Granulins; GRN; PCDGF; PEPI; PGRN; Proepithelin; Progranulin;
Isotype	Rabbit IgG
Host	Rabbit
Calculated MW	63544

Additional Information

Dilution	WB 1:500~1:2000 IHC 1:50~1:200 ICC/IF 1:50~1:200 IP 1:50 FC 1:100
Purification	Affinity-chromatography
Immunogen	A synthesized peptide derived from human Granulin
Description	Granulins have possible cytokine-like activity. They may play a role in inflammation, wound repair, and tissue remodeling.
Storage Condition and Buffer	Rabbit IgG in phosphate buffered saline , pH 7.4, 150mM NaCl, 0.02% sodium azide and 50% glycerol. Store at +4°C short term. Store at -20°C long term. Avoid freeze / thaw cycle.

Protein Information

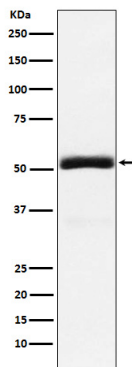
Name	GRN (HGNC:4601)
Function	Secreted protein that acts as a key regulator of lysosomal function and as a growth factor involved in inflammation, wound healing and cell proliferation (PubMed: 12526812 , PubMed: 18378771 , PubMed: 28073925 , PubMed: 28453791 , PubMed: 28541286). Regulates protein trafficking to lysosomes, and also the activity of lysosomal enzymes (PubMed: 28453791 , PubMed: 28541286). Also facilitates the acidification of lysosomes, causing degradation of mature CTSD by CTSB (PubMed: 28073925). In addition, functions as a wound-related growth factor that acts directly on dermal fibroblasts and endothelial cells to promote division, migration and the formation of capillary-like tubule structures (By similarity). Also promotes epithelial cell proliferation by blocking TNF-mediated neutrophil activation preventing release of oxidants and proteases (PubMed: 12526812). Moreover, modulates inflammation in neurons by preserving neurons survival, axonal outgrowth and neuronal integrity (PubMed: 18378771).
Cellular Location	Secreted. Lysosome Note=Endocytosed by SORT1 and delivered to lysosomes

(PubMed:21092856, PubMed:28073925). Targeted to lysosome by PSAP via M6PR and LRP1, in both biosynthetic and endocytic pathways (PubMed:26370502, PubMed:28073925). Co-localized with GBA1 in the intracellular trafficking compartments until to lysosome (By similarity) {ECO:0000250|UniProtKB:P28798, ECO:0000269|PubMed:21092856, ECO:0000269|PubMed:26370502, ECO:0000269|PubMed:28073925}

Tissue Location

In myelogenous leukemic cell lines of promonocytic, promyelocytic, and proerythroid lineage, in fibroblasts, and very strongly in epithelial cell lines. Present in inflammatory cells and bone marrow. Highest levels in kidney

Images



Western blot analysis of Granulin expression in 293T cell lysate.

Please note: All products are 'FOR RESEARCH USE ONLY. NOT FOR USE IN DIAGNOSTIC OR THERAPEUTIC PROCEDURES'.