

# WASP Antibody

Rabbit mAb

Catalog # AP92349

## Product Information

<b>Application</b>	WB, IF, FC, ICC, IP
<b>Primary Accession</b>	<a href="#">P42768</a>
<b>Reactivity</b>	Rat, Human, Mouse
<b>Clonality</b>	Monoclonal
<b>Other Names</b>	IMD2; SCN1; TH1; TH2; U42471; Was; WASp;
<b>Isotype</b>	Rabbit IgG
<b>Host</b>	Rabbit
<b>Calculated MW</b>	52913

## Additional Information

<b>Dilution</b>	WB 1:500~1:2000 ICC/IF 1:50~1:200 IP 1:40 FC 1:50
<b>Purification</b>	Affinity-chromatography
<b>Immunogen</b>	A synthesized peptide derived from human WASP
<b>Description</b>	Effector protein for Rho-type GTPases, providing a link with the Arp2/3 complex that regulates the structure and dynamics of the actin cytoskeleton. Important for efficient actin polymerization. Possible regulator of lymphocyte and platelet function.
<b>Storage Condition and Buffer</b>	Rabbit IgG in phosphate buffered saline , pH 7.4, 150mM NaCl, 0.02% sodium azide and 50% glycerol. Store at +4°C short term. Store at -20°C long term. Avoid freeze / thaw cycle.

## Protein Information

<b>Name</b>	WAS
<b>Synonyms</b>	IMD2
<b>Function</b>	Effector protein for Rho-type GTPases that regulates actin filament reorganization via its interaction with the Arp2/3 complex (PubMed: <a href="#">12235133</a> , PubMed: <a href="#">12769847</a> , PubMed: <a href="#">16275905</a> ). Important for efficient actin polymerization (PubMed: <a href="#">12235133</a> , PubMed: <a href="#">16275905</a> , PubMed: <a href="#">8625410</a> ). Possible regulator of lymphocyte and platelet function (PubMed: <a href="#">9405671</a> ). Mediates actin filament reorganization and the formation of actin pedestals upon infection by pathogenic bacteria (PubMed: <a href="#">18650809</a> ). In addition to its role in the cytoplasmic cytoskeleton, also promotes actin polymerization in the nucleus, thereby regulating gene transcription and repair of damaged DNA (PubMed: <a href="#">20574068</a> ). Promotes homologous recombination (HR) repair in response to DNA damage by promoting nuclear actin polymerization, leading to drive motility of double-strand breaks (DSBs) (PubMed: <a href="#">29925947</a> ).

**Cellular Location**

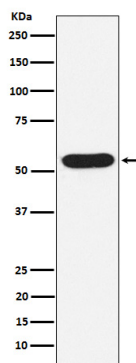
Cytoplasm, cytoskeleton. Nucleus

**Tissue Location**

Expressed predominantly in the thymus. Also found, to a much lesser extent, in the spleen.

**Images**

---



Western blot analysis of WASP expression in Jurkat cell lysate.

Please note: All products are 'FOR RESEARCH USE ONLY. NOT FOR USE IN DIAGNOSTIC OR THERAPEUTIC PROCEDURES'.