

# TRIM29 Antibody

Rabbit mAb

Catalog # AP92355

## Product Information

---

<b>Application</b>	WB
<b>Primary Accession</b>	<a href="#">Q14134</a>
<b>Reactivity</b>	Rat, Human, Mouse
<b>Clonality</b>	Monoclonal
<b>Other Names</b>	ATDC; TRIM29;

<b>Isotype</b>	Rabbit IgG
<b>Host</b>	Rabbit
<b>Calculated MW</b>	65835

## Additional Information

---

<b>Dilution</b>	WB 1:500~1:2000
<b>Purification</b>	Affinity-chromatography
<b>Immunogen</b>	A synthesized peptide derived from human TRIM29
<b>Description</b>	It is able to complement the radiosensitivity defect of an ataxia telangiectasia (AT) fibroblast cell line.
<b>Storage Condition and Buffer</b>	Rabbit IgG in phosphate buffered saline , pH 7.4, 150mM NaCl, 0.02% sodium azide and 50% glycerol. Store at +4°C short term. Store at -20°C long term. Avoid freeze / thaw cycle.

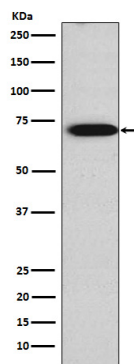
## Protein Information

---

<b>Name</b>	TRIM29
<b>Synonyms</b>	ATDC
<b>Function</b>	Plays a crucial role in the regulation of macrophage activation in response to viral or bacterial infections within the respiratory tract. Mechanistically, TRIM29 interacts with IKBKG/NEMO in the lysosome where it induces its 'Lys-48' ubiquitination and subsequent degradation. In turn, the expression of type I interferons and the production of pro-inflammatory cytokines are inhibited. Additionally, induces the 'Lys-48' ubiquitination of STING1 in a similar way, leading to its degradation.
<b>Cellular Location</b>	Cytoplasm. Lysosome. Note=Colocalizes with intermediate filaments
<b>Tissue Location</b>	Expressed in placenta, prostate and thymus.

## Images

---



Western blot analysis of TRIM29 expression in JAR cell lysate.

Please note: All products are 'FOR RESEARCH USE ONLY. NOT FOR USE IN DIAGNOSTIC OR THERAPEUTIC PROCEDURES'.