

Poliovirus Receptor Antibody

Rabbit mAb

Catalog # AP92356

Product Information

Application	WB, IP
Primary Accession	P15151
Reactivity	Human
Clonality	Monoclonal
Other Names	CD155; HVED; mE4; Necl5; PVR; PVS; Taa1; TAGE4;
Isotype	Rabbit IgG
Host	Rabbit
Calculated MW	45303

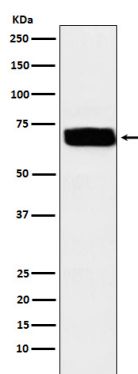
Additional Information

Dilution	WB 1:500~1:1000 IP 1:40
Purification	Affinity-chromatography
Immunogen	A synthesized peptide derived from human Poliovirus Receptor
Description	Mediates NK cell adhesion and triggers NK cell effector functions. Binds two different NK cell receptors: CD96 and CD226. These interactions accumulates at the cell-cell contact site, leading to the formation of a mature immunological synapse between NK cell and target cell.
Storage Condition and Buffer	Rabbit IgG in phosphate buffered saline , pH 7.4, 150mM NaCl, 0.02% sodium azide and 50% glycerol. Store at +4°C short term. Store at -20°C long term. Avoid freeze / thaw cycle.

Protein Information

Name	PVR
Synonyms	PVS
Function	Mediates NK cell adhesion and triggers NK cell effector functions. Binds two different NK cell receptors: CD96 and CD226. These interactions accumulates at the cell-cell contact site, leading to the formation of a mature immunological synapse between NK cell and target cell. This may trigger adhesion and secretion of lytic granules and IFN-gamma and activate cytotoxicity of activated NK cells. May also promote NK cell-target cell modular exchange, and PVR transfer to the NK cell. This transfer is more important in some tumor cells expressing a lot of PVR, and may trigger fratricide NK cell activation, providing tumors with a mechanism of immunoevasion. Plays a role in mediating tumor cell invasion and migration.
Cellular Location	[Isoform Alpha]: Cell membrane; Single-pass type I membrane protein [Isoform Beta]: Secreted.

Images



Western blot analysis of Poliovirus Receptor expression in U87-MG cell lysate.

Please note: All products are 'FOR RESEARCH USE ONLY. NOT FOR USE IN DIAGNOSTIC OR THERAPEUTIC PROCEDURES'.