

CCL4/MIP1 beta Antibody

Rabbit mAb

Catalog # AP92359

Product Information

Application	WB, IF, ICC, IP
Primary Accession	P13236
Reactivity	Human, Mouse
Clonality	Monoclonal
Other Names	ACT2; G-26; HC21; LAG1; LAG-1; MIP1B; SCYA2; SCYA4; MIP1B1; AT744.1;MIP-1-beta;
Isotype	Rabbit IgG
Host	Rabbit
Calculated MW	10212

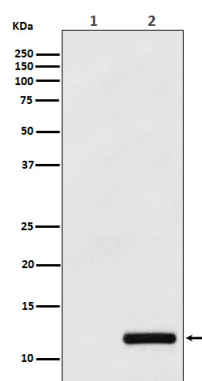
Additional Information

Dilution	WB 1:1000~1:5000 ICC/IF 1:50~1:200 IP 1:50
Purification	Affinity-chromatography
Immunogen	A synthesized peptide derived from human CCL4/MIP1 beta
Description	Monokine with inflammatory and chemokinetic properties. Binds to CCR5. One of the major HIV-suppressive factors produced by CD8+ T-cells. Recombinant MIP-1-beta induces a dose-dependent inhibition of different strains of HIV-1, HIV-2, and simian immunodeficiency virus (SIV).
Storage Condition and Buffer	Rabbit IgG in phosphate buffered saline , pH 7.4, 150mM NaCl, 0.02% sodium azide and 50% glycerol. Store at +4°C short term. Store at -20°C long term. Avoid freeze / thaw cycle.

Protein Information

Name	CCL4
Synonyms	LAG1, MIP1B, SCYA4
Function	Monokine with inflammatory and chemokinetic properties. Binds to CCR5. One of the major HIV-suppressive factors produced by CD8+ T- cells. Recombinant MIP-1-beta induces a dose-dependent inhibition of different strains of HIV-1, HIV-2, and simian immunodeficiency virus (SIV). The processed form MIP-1-beta(3-69) retains the abilities to induce down-modulation of surface expression of the chemokine receptor CCR5 and to inhibit the CCR5-mediated entry of HIV-1 in T-cells. MIP-1- beta(3-69) is also a ligand for CCR1 and CCR2 isoform B.
Cellular Location	Secreted.

Images



Western blot analysis of CCL4/MIP1 beta expression in (1) THP-1 cell lysate; (2) THP-1 cell treated with PMA+LPS+Brefeldin A.

Please note: All products are 'FOR RESEARCH USE ONLY. NOT FOR USE IN DIAGNOSTIC OR THERAPEUTIC PROCEDURES'.