

THRA Antibody

Rabbit mAb

Catalog # AP92371

Product Information

Application	WB
Primary Accession	P10827
Reactivity	Human
Clonality	Monoclonal
Other Names	AR7; CHNG6; EAR7; ERB-T-1; ERBA; ERBA1; NR1A1; THRA; THRA1; THRA2;
Isotype	Rabbit IgG
Host	Rabbit
Calculated MW	54816

Additional Information

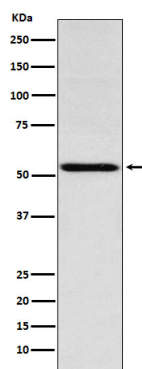
Dilution	WB 1:500~1:2000
Purification	Affinity-chromatography
Immunogen	A synthesized peptide derived from human THRA
Description	Nuclear hormone receptor that can act as a repressor or activator of transcription. High affinity receptor for thyroid hormones, including triiodothyronine and thyroxine.
Storage Condition and Buffer	Rabbit IgG in phosphate buffered saline , pH 7.4, 150mM NaCl, 0.02% sodium azide and 50% glycerol. Store at +4°C short term. Store at -20°C long term. Avoid freeze / thaw cycle.

Protein Information

Name	THRA
Synonyms	EAR7, ERBA1, NR1A1, THRA1, THRA2
Function	[Isoform Alpha-1]: Nuclear hormone receptor that can act as a repressor or activator of transcription. High affinity receptor for thyroid hormones, including triiodothyronine and thyroxine.
Cellular Location	Nucleus.

Images

Western blot analysis of THRA expression in Jurkat cell lysate.



Please note: All products are 'FOR RESEARCH USE ONLY. NOT FOR USE IN DIAGNOSTIC OR THERAPEUTIC PROCEDURES'.