

DCR2 Antibody

Rabbit mAb

Catalog # AP92380

Product Information

Application	WB, IHC, IF, ICC, IHF
Primary Accession	Q9UBN6
Reactivity	Human
Clonality	Monoclonal
Other Names	Dcr2; TRAIL receptor 4; TRAIL-R4; CD264; TNFRSF10D; DCR2; TRAILR4; TRUNDD;
Isotype	Rabbit IgG
Host	Rabbit
Calculated MW	41849

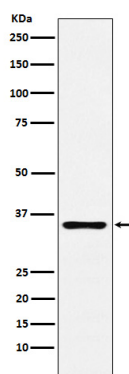
Additional Information

Dilution	WB 1:500~1:2000 IHC 1:50~1:200 ICC/IF 1:50~1:200
Purification	Affinity-chromatography
Immunogen	A synthesized peptide derived from human DCR2
Description	Receptor for the cytotoxic ligand TRAIL. Contains a truncated death domain and hence is not capable of inducing apoptosis but protects against TRAIL-mediated apoptosis. Reports are contradictory with regards to its ability to induce the NF-kappa-B pathway.
Storage Condition and Buffer	Rabbit IgG in phosphate buffered saline , pH 7.4, 150mM NaCl, 0.02% sodium azide and 50% glycerol. Store at +4°C short term. Store at -20°C long term. Avoid freeze / thaw cycle.

Protein Information

Name	TNFRSF10D (HGNC:11907)
Function	Receptor for the cytotoxic ligand TRAIL (PubMed: 9430226). Contains a truncated death domain and hence is not capable of inducing apoptosis but protects against TRAIL-mediated apoptosis (PubMed: 9537512). Reports are contradictory with regards to its ability to induce the NF-kappa-B pathway. According to PubMed: 9382840 , it cannot but according to PubMed: 9430226 , it can induce the NF-kappa-B pathway (PubMed: 9382840 , PubMed: 9430226).
Cellular Location	Membrane; Single-pass type I membrane protein
Tissue Location	Widely expressed, in particular in fetal kidney, lung and liver, and in adult testis and liver. Also expressed in peripheral blood leukocytes, colon and small intestine, ovary, prostate, thymus, spleen, pancreas, kidney, lung, placenta and heart

Images



Western blot analysis of DCR2 expression in Human prostate lysate.

Please note: All products are 'FOR RESEARCH USE ONLY. NOT FOR USE IN DIAGNOSTIC OR THERAPEUTIC PROCEDURES'.