

RAD23A Antibody

Rabbit mAb

Catalog # AP92385

Product Information

Application	WB, FC
Primary Accession	P54725
Reactivity	Rat, Human, Mouse
Clonality	Monoclonal
Other Names	hHR23A; HR23A; RAD 23a; RAD23A;
Isotype	Rabbit IgG
Host	Rabbit
Calculated MW	39609

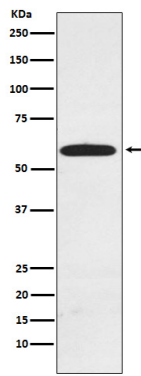
Additional Information

Dilution	WB 1:1000~1:5000 FC 1:50
Purification	Affinity-chromatography
Immunogen	A synthesized peptide derived from human RAD23A
Description	Multiubiquitin chain receptor involved in modulation of proteasomal degradation. Binds to 'Lys-48'-linked polyubiquitin chains in a length-dependent manner and with a lower affinity to 'Lys-63'-linked polyubiquitin chains.
Storage Condition and Buffer	Rabbit IgG in phosphate buffered saline , pH 7.4, 150mM NaCl, 0.02% sodium azide and 50% glycerol. Store at +4°C short term. Store at -20°C long term. Avoid freeze / thaw cycle.

Protein Information

Name	RAD23A
Function	Multiubiquitin chain receptor involved in modulation of proteasomal degradation. Binds to 'Lys-48'-linked polyubiquitin chains in a length-dependent manner and with a lower affinity to 'Lys-63'- linked polyubiquitin chains. Proposed to be capable to bind simultaneously to the 26S proteasome and to polyubiquitinated substrates and to deliver ubiquitinated proteins to the proteasome. (Microbial infection) Involved in Vpr-dependent replication of HIV-1 in non-proliferating cells and primary macrophages. Required for the association of HIV-1 Vpr with the host proteasome.
Cellular Location	Nucleus.

Images



Western blot analysis of RAD23A expression in MCF7 cell lysate.

Please note: All products are 'FOR RESEARCH USE ONLY. NOT FOR USE IN DIAGNOSTIC OR THERAPEUTIC PROCEDURES'.