

# MAGE 1 Antibody

Rabbit mAb

Catalog # AP92394

## Product Information

---

<b>Application</b>	WB, IF, FC, ICC
<b>Primary Accession</b>	<a href="#">P43355</a>
<b>Reactivity</b>	Rat, Human, Mouse
<b>Clonality</b>	Monoclonal
<b>Other Names</b>	CT1.1; MAGE1; MAGE1A; MAGEA1;
<b>Isotype</b>	Rabbit IgG
<b>Host</b>	Rabbit
<b>Calculated MW</b>	34342

## Additional Information

---

<b>Dilution</b>	WB 1:500~1:2000 ICC/IF 1:50~1:200 FC 1:50
<b>Purification</b>	Affinity-chromatography
<b>Immunogen</b>	A synthesized peptide derived from human MAGE 1
<b>Description</b>	May be involved in transcriptional regulation through interaction with SNW1 and recruiting histone deacetylase HDAC1. May inhibit notch intracellular domain (NICD) transactivation. May play a role in embryonal development and tumor transformation or aspects of tumor progression.
<b>Storage Condition and Buffer</b>	Rabbit IgG in phosphate buffered saline , pH 7.4, 150mM NaCl, 0.02% sodium azide and 50% glycerol. Store at +4°C short term. Store at -20°C long term. Avoid freeze / thaw cycle.

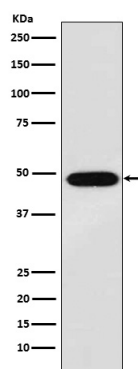
## Protein Information

---

<b>Name</b>	MAGEA1
<b>Synonyms</b>	MAGE1, MAGE1A
<b>Function</b>	May be involved in transcriptional regulation through interaction with SNW1 and recruiting histone deacetylase HDAC1. May inhibit notch intracellular domain (NICD) transactivation. May play a role in embryonal development and tumor transformation or aspects of tumor progression. Antigen recognized on a melanoma by autologous cytolytic T-lymphocytes.
<b>Cellular Location</b>	Cytoplasm. Nucleus.
<b>Tissue Location</b>	Expressed in many tumors of several types, such as melanoma, head and neck squamous cell carcinoma, lung carcinoma and breast carcinoma, but not in normal tissues except for testes. Never expressed in kidney tumors, leukemias and lymphomas

## Images

---



Western blot analysis of MAGE 1 expression in A375 cell lysate.

Please note: All products are 'FOR RESEARCH USE ONLY. NOT FOR USE IN DIAGNOSTIC OR THERAPEUTIC PROCEDURES'.