

STXBP1 Antibody

Rabbit mAb

Catalog # AP92400

Product Information

Application	WB, IHC, IF, ICC, IHF
Primary Accession	P61764
Reactivity	Rat, Human, Mouse
Clonality	Monoclonal
Other Names	P67; NSEC1; UNC18; RBSEC1; MUNC18-1;
Isotype	Rabbit IgG
Host	Rabbit
Calculated MW	67569

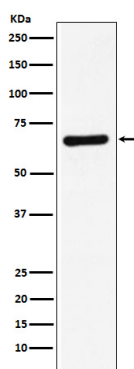
Additional Information

Dilution	WB 1:1000~1:5000 IHC 1:50~1:200 ICC/IF 1:50~1:200
Purification	Affinity-chromatography
Immunogen	A synthesized peptide derived from human STXBP1
Description	May participate in the regulation of synaptic vesicle docking and fusion, possibly through interaction with GTP-binding proteins. Essential for neurotransmission and binds syntaxin, a component of the synaptic vesicle fusion machinery probably in a 1:1 ratio.
Storage Condition and Buffer	Rabbit IgG in phosphate buffered saline , pH 7.4, 150mM NaCl, 0.02% sodium azide and 50% glycerol. Store at +4°C short term. Store at -20°C long term. Avoid freeze / thaw cycle.

Protein Information

Name	STXBP1
Synonyms	UNC18A
Function	Participates in the regulation of synaptic vesicle docking and fusion through interaction with GTP-binding proteins (By similarity). Essential for neurotransmission and binds syntaxin, a component of the synaptic vesicle fusion machinery probably in a 1:1 ratio. Can interact with syntaxins 1, 2, and 3 but not syntaxin 4. Involved in the release of neurotransmitters from neurons through interacting with SNARE complex component STX1A and mediating the assembly of the SNARE complex at synaptic membranes (By similarity). May play a role in determining the specificity of intracellular fusion reactions.
Cellular Location	Cytoplasm, cytosol. Membrane; Peripheral membrane protein
Tissue Location	Brain and spinal cord. Highly enriched in axons.

Images



Western blot analysis of STXBP1 expression in HeLa cell lysate.

Please note: All products are 'FOR RESEARCH USE ONLY. NOT FOR USE IN DIAGNOSTIC OR THERAPEUTIC PROCEDURES'.