

# VEGFB Antibody

Rabbit mAb

Catalog # AP92403

## Product Information

---

<b>Application</b>	WB
<b>Primary Accession</b>	<a href="#">P49765</a>
<b>Reactivity</b>	Human, Mouse
<b>Clonality</b>	Monoclonal
<b>Other Names</b>	VEGF B; Vegfb; VEGFL; VRF;
<b>Isotype</b>	Rabbit IgG
<b>Host</b>	Rabbit
<b>Calculated MW</b>	21602

## Additional Information

---

<b>Dilution</b>	WB 1:500~1:2000
<b>Purification</b>	Affinity-chromatography
<b>Immunogen</b>	A synthesized peptide derived from human VEGFB
<b>Description</b>	Growth factor for endothelial cells. VEGF-B167 binds heparin and neuropilin-1 whereas the binding to neuropilin-1 of VEGF-B186 is regulated by proteolysis.
<b>Storage Condition and Buffer</b>	Rabbit IgG in phosphate buffered saline , pH 7.4, 150mM NaCl, 0.02% sodium azide and 50% glycerol. Store at +4°C short term. Store at -20°C long term. Avoid freeze / thaw cycle.

## Protein Information

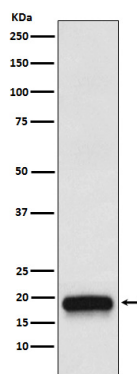
---

<b>Name</b>	VEGFB
<b>Synonyms</b>	VRF
<b>Function</b>	Growth factor for endothelial cells. VEGF-B167 binds heparin and neuropilin-1 whereas the binding to neuropilin-1 of VEGF-B186 is regulated by proteolysis.
<b>Cellular Location</b>	Secreted. Note=Secreted but remains associated to cells or to the extracellular matrix unless released by heparin
<b>Tissue Location</b>	Expressed in all tissues except liver. Highest levels found in heart, skeletal muscle and pancreas

## Images

---

Western blot analysis of VEGFB expression in 293T cell



transfected with VEGFB recombinant protein.

Please note: All products are 'FOR RESEARCH USE ONLY. NOT FOR USE IN DIAGNOSTIC OR THERAPEUTIC PROCEDURES'.