

CSNK1A1 Antibody

Rabbit mAb

Catalog # AP92406

Product Information

Application	WB
Primary Accession	P48729
Reactivity	Rat, Human, Mouse
Clonality	Monoclonal
Other Names	CK1; CK1A; CKI alpha; CKIa; Csnk1a1; HLCDGP1;
Isotype	Rabbit IgG
Host	Rabbit
Calculated MW	38915

Additional Information

Dilution	WB 1:500~1:2000
Purification	Affinity-chromatography
Immunogen	A synthesized peptide derived from human CSNK1A1
Description	Casein kinases are operationally defined by their preferential utilization of acidic proteins such as caseins as substrates. It can phosphorylate a large number of proteins. Participates in Wnt signaling. Phosphorylates CTNNB1 at 'Ser-45'. May play a role in segregating chromosomes during mitosis.
Storage Condition and Buffer	Rabbit IgG in phosphate buffered saline , pH 7.4, 150mM NaCl, 0.02% sodium azide and 50% glycerol. Store at +4°C short term. Store at -20°C long term. Avoid freeze / thaw cycle.

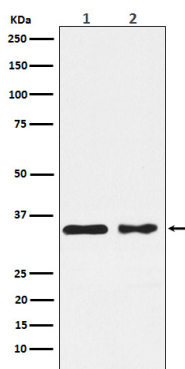
Protein Information

Name	CSNK1A1
Function	Casein kinases are operationally defined by their preferential utilization of acidic proteins such as caseins as substrates (PubMed: 11955436 , PubMed: 1409656 , PubMed: 18305108 , PubMed: 23902688). It can phosphorylate a large number of proteins (PubMed: 11955436 , PubMed: 1409656 , PubMed: 18305108 , PubMed: 23902688). Participates in Wnt signaling (PubMed: 11955436). Phosphorylates CTNNB1 at 'Ser-45' (PubMed: 11955436). May phosphorylate PER1 and PER2 (By similarity). May play a role in segregating chromosomes during mitosis (PubMed: 1409656). May play a role in keratin cytoskeleton disassembly and thereby, it may regulate epithelial cell migration (PubMed: 23902688). Acts as a positive regulator of mTORC1 and mTORC2 signaling in response to nutrients by mediating phosphorylation of DEPTOR inhibitor (PubMed: 22017875 , PubMed: 22017877). Acts as an inhibitor of NLRP3 inflammasome assembly by mediating phosphorylation of NLRP3 (By similarity).

Cellular Location

Cytoplasm. Cytoplasm, cytoskeleton, microtubule organizing center, centrosome. Chromosome, centromere, kinetochore. Nucleus speckle. Cytoplasm, cytoskeleton, cilium basal body {ECO:0000250|UniProtKB:Q8BK63}. Cytoplasm, cytoskeleton, spindle {ECO:0000250|UniProtKB:Q8BK63}. Note=Localizes to the centrosome in interphase cells, and to kinetochore fibers during mitosis. Also recruited to the keratin cytoskeleton (PubMed:23902688)

Images



Western blot analysis of CSNK1A1 expression in (1) MCF7 cell lysate; (2) NIH/3T3 cell lysate.

Please note: All products are 'FOR RESEARCH USE ONLY. NOT FOR USE IN DIAGNOSTIC OR THERAPEUTIC PROCEDURES'.