

RCC1 Antibody

Rabbit mAb

Catalog # AP92411

Product Information

Application	WB, IHC, IF, FC, ICC, IP, IHF
Primary Accession	P18754
Reactivity	Rat, Human, Mouse
Clonality	Monoclonal
Other Names	RCC1; RCC1-I; SNHG3-RCC1; CHC1;
Isotype	Rabbit IgG
Host	Rabbit
Calculated MW	44969

Additional Information

Dilution	WB 1:500~1:2000 IHC 1:50~1:200 ICC/IF 1:100~1:500 IP 1:50 FC 1:500
Purification	Affinity-chromatography
Immunogen	A synthesized peptide derived from human RCC1
Description	Guanine-nucleotide releasing factor that promotes the exchange of Ran-bound GDP by GTP. Involved in the regulation of onset of chromosome condensation in the S phase. Binds both to the nucleosomes and double-stranded DNA.
Storage Condition and Buffer	Rabbit IgG in phosphate buffered saline , pH 7.4, 150mM NaCl, 0.02% sodium azide and 50% glycerol. Store at +4°C short term. Store at -20°C long term. Avoid freeze / thaw cycle.

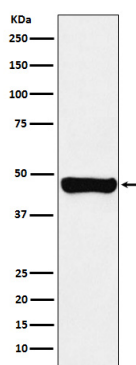
Protein Information

Name	RCC1
Synonyms	CHC1
Function	Guanine-nucleotide releasing factor that promotes the exchange of Ran-bound GDP by GTP, and thereby plays an important role in RAN-mediated functions in nuclear import and mitosis (PubMed: 11336674 , PubMed: 17435751 , PubMed: 1944575 , PubMed: 20668449 , PubMed: 22215983 , PubMed: 29042532). Contributes to the generation of high levels of chromosome-associated, GTP-bound RAN, which is important for mitotic spindle assembly and normal progress through mitosis (PubMed: 12194828 , PubMed: 17435751 , PubMed: 22215983). Via its role in maintaining high levels of GTP-bound RAN in the nucleus, contributes to the release of cargo proteins from importins after nuclear import (PubMed: 22215983). Involved in the regulation of onset of chromosome condensation in the S phase (PubMed: 3678831). Binds both to the nucleosomes and double-stranded DNA (PubMed: 17435751 , PubMed: 18762580).

Cellular Location

Nucleus. Chromosome. Cytoplasm Note=Predominantly nuclear in interphase cells (PubMed:12194828). Binds to mitotic chromosomes (PubMed:12194828, PubMed:17435751, PubMed:20668449).

Images



Western blot analysis of RCC1 expression in A431 cell lysate.

Please note: All products are 'FOR RESEARCH USE ONLY. NOT FOR USE IN DIAGNOSTIC OR THERAPEUTIC PROCEDURES'.