

NR2E1 Antibody

Rabbit mAb

Catalog # AP92414

Product Information

Application	WB
Primary Accession	Q9Y466
Reactivity	Rat, Human, Mouse
Clonality	Monoclonal
Other Names	hTll; nr2e1; Tll; TLX; XTLL;
Isotype	Rabbit IgG
Host	Rabbit
Calculated MW	42589

Additional Information

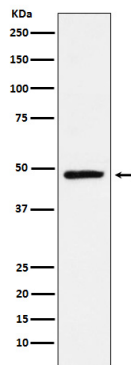
Dilution	WB 1:500~1:2000
Purification	Affinity-chromatography
Immunogen	A synthesized peptide derived from human NR2E1
Description	Orphan receptor that binds DNA as a monomer to hormone response elements (HRE) containing an extended core motif half-site sequence 5'-AAGGTCA-3' in which the 5' flanking nucleotides participate in determining receptor specificity.
Storage Condition and Buffer	Rabbit IgG in phosphate buffered saline , pH 7.4, 150mM NaCl, 0.02% sodium azide and 50% glycerol. Store at +4°C short term. Store at -20°C long term. Avoid freeze / thaw cycle.

Protein Information

Name	NR2E1
Synonyms	TLX
Function	Orphan receptor that binds DNA as a monomer to hormone response elements (HRE) containing an extended core motif half-site sequence 5'-AAGGTCA-3' in which the 5' flanking nucleotides participate in determining receptor specificity (By similarity). May be required to pattern anterior brain differentiation. Involved in the regulation of retinal development and essential for vision. During retinogenesis, regulates PTEN-Cyclin D expression via binding to the promoter region of PTEN and suppressing its activity (By similarity). May be involved in retinoic acid receptor (RAR) regulation in retinal cells.
Cellular Location	Nucleus {ECO:0000255 PROSITE-ProRule:PRU00407}.
Tissue Location	Brain specific. Present in all brain sections tested, highest levels in the

caudate nucleus and hippocampus, weakest levels in the thalamus.

Images



Western blot analysis of NR2E1 / Tailless expression in SH-SY5Y cell lysate.

Please note: All products are 'FOR RESEARCH USE ONLY. NOT FOR USE IN DIAGNOSTIC OR THERAPEUTIC PROCEDURES'.