

LEFTY1 + LEFTY2 Antibody

Rabbit mAb

Catalog # AP92419

Product Information

Application	WB, IP
Primary Accession	O00292
Reactivity	Rat, Human, Mouse
Clonality	Monoclonal
Other Names	EBAF; LEFTA; LEFTB; LEFTY1; LEFTYA; LEFTYB; PSEC0024; TGFB4;
Isotype	Rabbit IgG
Host	Rabbit
Calculated MW	40920

Additional Information

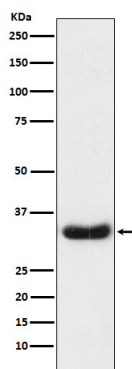
Dilution	WB 1:1000~1:5000 IP 1:50
Purification	Affinity-chromatography
Immunogen	A synthesized peptide derived from human LEFTY1 + LEFTY2
Description	Function for LEFTY1: Required for left-right axis determination as a regulator of LEFTY2 and NODAL. Function for LEFTY2: Required for left-right (L-R) asymmetry determination of organ systems in mammals. May play a role in endometrial bleeding.
Storage Condition and Buffer	Rabbit IgG in phosphate buffered saline , pH 7.4, 150mM NaCl, 0.02% sodium azide and 50% glycerol. Store at +4°C short term. Store at -20°C long term. Avoid freeze / thaw cycle.

Protein Information

Name	LEFTY2
Synonyms	EBAF, LEFTA, LEFTYA, TGFB4
Function	Required for left-right (L-R) asymmetry determination of organ systems in mammals. May play a role in endometrial bleeding.
Cellular Location	Secreted.
Tissue Location	Mesenchymal cells of the endometrial stroma.

Images

Western blot analysis of LEFTY1 + LEFTY2 expression in Caco2 cell lysate.



Please note: All products are 'FOR RESEARCH USE ONLY. NOT FOR USE IN DIAGNOSTIC OR THERAPEUTIC PROCEDURES'.