

PLCG2 Antibody

Rabbit mAb

Catalog # AP92435

Product Information

Application	WB, IHC, FC, IP
Primary Accession	P16885
Reactivity	Human
Clonality	Monoclonal
Other Names	PLC 2; PLC gamma 2; PLC IV; PLC-IV; Plcg2;
Isotype	Rabbit IgG
Host	Rabbit
Calculated MW	147870

Additional Information

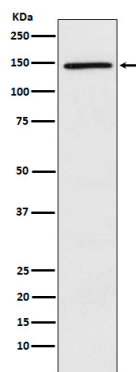
Dilution	WB 1:1000~1:5000 IHC 1:50~1:200 IP 1:50 FC 1:100
Purification	Affinity-chromatography
Immunogen	A synthesized peptide derived from human PLCG2
Description	The production of the second messenger molecules diacylglycerol (DAG) and inositol 1,4,5-trisphosphate (IP3) is mediated by activated phosphatidylinositol-specific phospholipase C enzymes. It is a crucial enzyme in transmembrane signaling.
Storage Condition and Buffer	Rabbit IgG in phosphate buffered saline , pH 7.4, 150mM NaCl, 0.02% sodium azide and 50% glycerol. Store at +4°C short term. Store at -20°C long term. Avoid freeze / thaw cycle.

Protein Information

Name	PLCG2 (HGNC:9066)
Function	The production of the second messenger molecules diacylglycerol (DAG) and inositol 1,4,5-trisphosphate (IP3) is mediated by activated phosphatidylinositol-specific phospholipase C enzymes. It is a crucial enzyme in transmembrane signaling.
Cellular Location	Membrane raft {ECO:0000250 UniProtKB:Q8CIH5}.

Images

Western blot analysis of PLCG 2 expression in Ramos cell lysate.



Please note: All products are 'FOR RESEARCH USE ONLY. NOT FOR USE IN DIAGNOSTIC OR THERAPEUTIC PROCEDURES'.