

# STC1 Antibody

Rabbit mAb

Catalog # AP92437

## Product Information

---

<b>Application</b>	WB, IP
<b>Primary Accession</b>	<a href="#">P52823</a>
<b>Reactivity</b>	Human
<b>Clonality</b>	Monoclonal
<b>Other Names</b>	Stanniocalcin; STC; STC-1; Stc1;
<b>Isotype</b>	Rabbit IgG
<b>Host</b>	Rabbit
<b>Calculated MW</b>	27621

## Additional Information

---

<b>Dilution</b>	WB 1:500~1:200 IP 1:50
<b>Purification</b>	Affinity-chromatography
<b>Immunogen</b>	A synthesized peptide derived from human STC1
<b>Description</b>	Stimulates renal phosphate reabsorption, and could therefore prevent hypercalcemia.
<b>Storage Condition and Buffer</b>	Rabbit IgG in phosphate buffered saline , pH 7.4, 150mM NaCl, 0.02% sodium azide and 50% glycerol. Store at +4°C short term. Store at -20°C long term. Avoid freeze / thaw cycle.

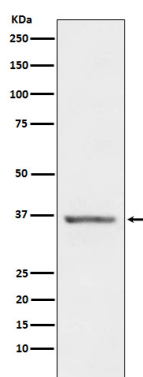
## Protein Information

---

<b>Name</b>	STC1
<b>Synonyms</b>	STC
<b>Function</b>	Stimulates renal phosphate reabsorption, and could therefore prevent hypercalcemia.
<b>Cellular Location</b>	Secreted.
<b>Tissue Location</b>	Expressed in most tissues, with the highest levels in ovary, prostate, heart, kidney and thyroid. In the kidney, expression is confined to the nephron, specifically in the distal convoluted tubule and in the collecting tubule. Not detected in the brain, liver, spleen, peripheral blood leukocytes and adrenal medulla

## Images

---



Western blot analysis of STC1 expression in Human Prostate lysate.

Please note: All products are 'FOR RESEARCH USE ONLY. NOT FOR USE IN DIAGNOSTIC OR THERAPEUTIC PROCEDURES'.