

LHX3 Antibody

Rabbit mAb

Catalog # AP92440

Product Information

Application	WB, FC, IP
Primary Accession	Q9UBR4
Reactivity	Rat, Human, Mouse
Clonality	Monoclonal
Other Names	CPHD3; LHX3; Lim3; M2 LHX3; mLim-3; mLIM3; P LIM;
Isotype	Rabbit IgG
Host	Rabbit
Calculated MW	43358

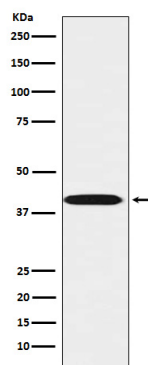
Additional Information

Dilution	WB 1:500~1:2000 IP 1:50 FC 1:50
Purification	Affinity-chromatography
Immunogen	A synthesized peptide derived from human LHX3
Description	Acts as a transcriptional activator. Binds to and activates the promoter of the alpha-glycoprotein gene, and synergistically enhances transcription from the prolactin promoter in cooperation with Pit-1.
Storage Condition and Buffer	Rabbit IgG in phosphate buffered saline , pH 7.4, 150mM NaCl, 0.02% sodium azide and 50% glycerol. Store at +4°C short term. Store at -20°C long term. Avoid freeze / thaw cycle.

Protein Information

Name	LHX3
Function	Transcription factor. Recognizes and binds to the consensus sequence motif 5'-AATTAATTA-3' in the regulatory elements of target genes, such as glycoprotein hormones alpha chain CGA and visual system homeobox CHX10, positively modulating transcription; transcription can be co-activated by LDB2. Synergistically enhances transcription from the prolactin promoter in cooperation with POU1F1/Pit-1 (By similarity). Required for the establishment of the specialized cells of the pituitary gland and the nervous system (PubMed: 21149718). Involved in the development of interneurons and motor neurons in cooperation with LDB1 and ISL1 (By similarity).
Cellular Location	Nucleus.

Images



Western blot analysis of LHX3 expression in Jurkat cell lysate.

Please note: All products are 'FOR RESEARCH USE ONLY. NOT FOR USE IN DIAGNOSTIC OR THERAPEUTIC PROCEDURES'.