

ATP7b Antibody

Rabbit mAb

Catalog # AP92454

Product Information

Application	WB, IF, FC, ICC
Primary Accession	P35670
Reactivity	Human
Clonality	Monoclonal
Other Names	ATP7B; PWD; WC1; WD; WND; WND/140 kDa;
Isotype	Rabbit IgG
Host	Rabbit
Calculated MW	157263

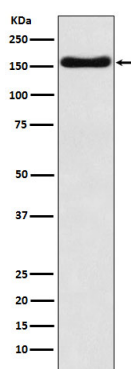
Additional Information

Dilution	WB 1:500~1:2000 ICC/IF 1:50~1:200 FC 1:50
Purification	Affinity-chromatography
Immunogen	A synthesized peptide derived from human ATP7b
Description	Involved in the export of copper out of the cells, such as the efflux of hepatic copper into the bile.
Storage Condition and Buffer	Rabbit IgG in phosphate buffered saline , pH 7.4, 150mM NaCl, 0.02% sodium azide and 50% glycerol. Store at +4°C short term. Store at -20°C long term. Avoid freeze / thaw cycle.

Protein Information

Name	ATP7B
Synonyms	PWD, WC1, WND
Function	Copper ion transmembrane transporter involved in the export of copper out of the cells. It is involved in copper homeostasis in the liver, where it ensures the efflux of copper from hepatocytes into the bile in response to copper overload.
Cellular Location	Golgi apparatus, trans-Golgi network membrane; Multi-pass membrane protein. Late endosome Note=Predominantly found in the trans-Golgi network (TGN). Localized in the trans-Golgi network under low copper conditions, redistributes to cytoplasmic vesicles when cells are exposed to elevated copper levels, and then recycles back to the trans-Golgi network when copper is removed (PubMed:10942420). [Isoform 2]: Cytoplasm
Tissue Location	Most abundant in liver and kidney and also found in brain. Isoform 2 is expressed in brain but not in liver. The cleaved form WND/140 kDa is found in liver cell lines and other tissues

Images



Western blot analysis of ATP7b expression in HepG2 cell lysate.

Please note: All products are 'FOR RESEARCH USE ONLY. NOT FOR USE IN DIAGNOSTIC OR THERAPEUTIC PROCEDURES'.