

Renin Antibody

Rabbit mAb

Catalog # AP92455

Product Information

Application	WB, FC
Primary Accession	P00797
Reactivity	Human
Clonality	Monoclonal
Other Names	Angiotensinogenase; HNFJ2; REN; Ren1; Renin;
Isotype	Rabbit IgG
Host	Rabbit
Calculated MW	45057

Additional Information

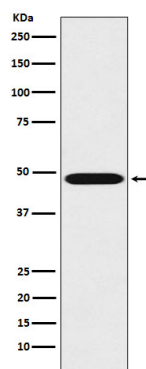
Dilution	WB 1:500~1:2000 FC 1:50
Purification	Affinity-chromatography
Immunogen	A synthesized peptide derived from human Renin
Description	Renin is a highly specific endopeptidase, whose only known function is to generate angiotensin I from angiotensinogen in the plasma, initiating a cascade of reactions that produce an elevation of blood pressure and increased sodium retention by the kidney.
Storage Condition and Buffer	Rabbit IgG in phosphate buffered saline , pH 7.4, 150mM NaCl, 0.02% sodium azide and 50% glycerol. Store at +4°C short term. Store at -20°C long term. Avoid freeze / thaw cycle.

Protein Information

Name	REN
Function	Renin is a highly specific endopeptidase, whose only known function is to generate angiotensin I from angiotensinogen in the plasma, initiating a cascade of reactions that produce an elevation of blood pressure and increased sodium retention by the kidney.
Cellular Location	Secreted. Membrane. Note=Associated to membranes via binding to ATP6AP2.

Images

Western blot analysis of Renin expression in K562 cell lysate.



Please note: All products are 'FOR RESEARCH USE ONLY. NOT FOR USE IN DIAGNOSTIC OR THERAPEUTIC PROCEDURES'.