

KLK2 Antibody

Rabbit mAb

Catalog # AP92456

Product Information

Application	WB, IF, ICC
Primary Accession	P20151
Reactivity	Rat, Human, Mouse
Clonality	Monoclonal
Other Names	hK2; hGK-1; KLK2A2;
Isotype	Rabbit IgG
Host	Rabbit
Calculated MW	28671

Additional Information

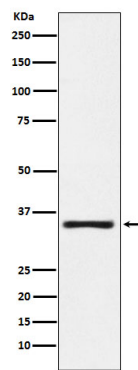
Dilution	WB 1:500~1:2000 ICC/IF 1:50~1:200
Purification	Affinity-chromatography
Immunogen	A synthesized peptide derived from human KLK2
Description	Glandular kallikreins cleave Met-Lys and Arg-Ser bonds in kininogen to release Lys-bradykinin.
Storage Condition and Buffer	Rabbit IgG in phosphate buffered saline , pH 7.4, 150mM NaCl, 0.02% sodium azide and 50% glycerol. Store at +4°C short term. Store at -20°C long term. Avoid freeze / thaw cycle.

Protein Information

Name	KLK2
Function	Glandular kallikreins cleave Met-Lys and Arg-Ser bonds in kininogen to release Lys-bradykinin.

Images

Western blot analysis of KLK2 expression in MOLT4 cell lysate.



Please note: All products are 'FOR RESEARCH USE ONLY. NOT FOR USE IN DIAGNOSTIC OR THERAPEUTIC PROCEDURES'.