

IL12 p40 Antibody

Rabbit mAb

Catalog # AP92471

Product Information

Application	WB
Primary Accession	P29460
Reactivity	Human
Clonality	Monoclonal
Other Names	CLMF; CLMF p40; CLMF2; IL12B; NKSF; NKSF2;
Isotype	Rabbit IgG
Host	Rabbit
Calculated MW	37169

Additional Information

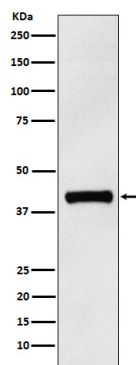
Dilution	WB 1:500~1:2000
Purification	Affinity-chromatography
Immunogen	A synthesized peptide derived from human IL12 p40
Description	Cytokine that can act as a growth factor for activated T and NK cells, enhance the lytic activity of NK/lymphokine-activated killer cells, and stimulate the production of IFN-gamma by resting PBMC.
Storage Condition and Buffer	Rabbit IgG in phosphate buffered saline , pH 7.4, 150mM NaCl, 0.02% sodium azide and 50% glycerol. Store at +4°C short term. Store at -20°C long term. Avoid freeze / thaw cycle.

Protein Information

Name	IL12B
Synonyms	NKSF2
Function	Cytokine that can act as a growth factor for activated T and NK cells, enhance the lytic activity of NK/lymphokine-activated killer cells, and stimulate the production of IFN-gamma by resting PBMC.
Cellular Location	Secreted.

Images

Western blot analysis of IL12 p40 expression in Human IL12 p40 recombinant protein.



Please note: All products are 'FOR RESEARCH USE ONLY. NOT FOR USE IN DIAGNOSTIC OR THERAPEUTIC PROCEDURES'.