

FRA1 Antibody

Rabbit mAb

Catalog # AP92475

Product Information

Application	WB, IF, ICC
Primary Accession	P15407
Reactivity	Human
Clonality	Monoclonal
Other Names	FOS L1; FOS like antigen 1; FOSL1; FRA 1;
Isotype	Rabbit IgG
Host	Rabbit
Calculated MW	29413

Additional Information

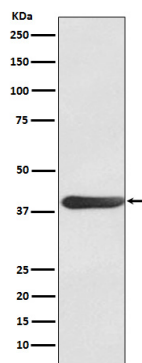
Dilution	WB 1:500~1:2000 ICC/IF 1:50~1:200
Purification	Affinity-chromatography
Immunogen	A synthesized peptide derived from human FRA1
Description	Belongs to the bZIP family. Fos subfamily. Contains 1 bZIP domain.
Storage Condition and Buffer	Rabbit IgG in phosphate buffered saline , pH 7.4, 150mM NaCl, 0.02% sodium azide and 50% glycerol. Store at +4°C short term. Store at -20°C long term. Avoid freeze / thaw cycle.

Protein Information

Name	FOSL1
Synonyms	FRA1
Cellular Location	Nucleus {ECO:0000250 UniProtKB:P51145}.

Images

Western blot analysis of FRA1 expression in HL60 cell lysate.



Please note: All products are 'FOR RESEARCH USE ONLY. NOT FOR USE IN DIAGNOSTIC OR THERAPEUTIC PROCEDURES'.