

# CDC123 Antibody

Rabbit mAb

Catalog # AP92486

## Product Information

<b>Application</b>	WB, FC, IP
<b>Primary Accession</b>	<a href="#">O75794</a>
<b>Reactivity</b>	Rat, Human, Mouse
<b>Clonality</b>	Monoclonal
<b>Other Names</b>	C10orf7; CDC123; Cell division cycle 123; D123; HT 1080; PZ32;
<b>Isotype</b>	Rabbit IgG
<b>Host</b>	Rabbit
<b>Calculated MW</b>	39135

## Additional Information

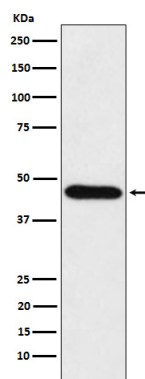
<b>Dilution</b>	WB 1:500~1:2000 IP 1:50 FC 1:50
<b>Purification</b>	Affinity-chromatography
<b>Immunogen</b>	A synthesized peptide derived from human CDC123
<b>Description</b>	Required for S phase entry of the cell cycle.
<b>Storage Condition and Buffer</b>	Rabbit IgG in phosphate buffered saline , pH 7.4, 150mM NaCl, 0.02% sodium azide and 50% glycerol. Store at +4°C short term. Store at -20°C long term. Avoid freeze / thaw cycle.

## Protein Information

<b>Name</b>	CDC123
<b>Synonyms</b>	C10orf7, D123
<b>Function</b>	ATP-dependent protein-folding chaperone for the eIF2 complex (PubMed: <a href="#">35031321</a> , PubMed: <a href="#">37507029</a> ). Binds to the gamma subunit of the eIF2 complex which allows the subunit to assemble with the alpha and beta subunits (By similarity).
<b>Cellular Location</b>	Cytoplasm {ECO:0000250 UniProtKB:Q62834}.
<b>Tissue Location</b>	Widely expressed. Expressed in spleen, thymus, prostate, testis, ovary, small intestine, colon and leukocytes with the highest expression in testis.

## Images

Western blot analysis of CDC123 expression in HeLa cell lysate.



Please note: All products are 'FOR RESEARCH USE ONLY. NOT FOR USE IN DIAGNOSTIC OR THERAPEUTIC PROCEDURES'.