

TOP2A Antibody (C-term)

Affinity Purified Rabbit Polyclonal Antibody (Pab)

Catalog # AP9248B

Product Information

| | |
|--------------------------|--|
| Application | WB, IHC-P, IF, E |
| Primary Accession | P11388 |
| Other Accession | P41516 , Q01320 , P41515 |
| Reactivity | Human, Rat, Mouse |
| Predicted | Hamster, Mouse, Rat |
| Host | Rabbit |
| Clonality | Polyclonal |
| Isotype | Rabbit IgG |
| Clone Names | RB24346 |
| Calculated MW | 174385 |
| Antigen Region | 1167-1196 |

Additional Information

| | |
|---------------------------|---|
| Gene ID | 7153 |
| Other Names | DNA topoisomerase 2-alpha, DNA topoisomerase II, alpha isozyme, TOP2A, TOP2 |
| Target/Specificity | This TOP2A antibody is generated from rabbits immunized with a KLH conjugated synthetic peptide between 1167-1196 amino acids from the C-terminal region of human TOP2A. |
| Dilution | WB~~1:1000 IHC-P~~1:100~500 IF~~1:10~50 E~~Use at an assay dependent concentration. |
| Format | Purified polyclonal antibody supplied in PBS with 0.05% (V/V) Proclin 300. This antibody is purified through a protein A column, followed by peptide affinity purification. |
| Storage | Maintain refrigerated at 2-8°C for up to 2 weeks. For long term storage store at -20°C in small aliquots to prevent freeze-thaw cycles. |
| Precautions | TOP2A Antibody (C-term) is for research use only and not for use in diagnostic or therapeutic procedures. |

Protein Information

| | |
|-----------------|-------|
| Name | TOP2A |
| Synonyms | TOP2 |

| | |
|--------------------------|---|
| Function | Key decatenating enzyme that alters DNA topology by binding to two double-stranded DNA molecules, generating a double-stranded break in one of the strands, passing the intact strand through the broken strand, and religating the broken strand (PubMed: 17567603 , PubMed: 18790802 , PubMed: 22013166 , PubMed: 22323612). May play a role in regulating the period length of BMAL1 transcriptional oscillation (By similarity). |
| Cellular Location | Cytoplasm. Nucleus, nucleoplasm. Nucleus. Nucleus, nucleolus |
| Tissue Location | Expressed in the tonsil, spleen, lymph node, thymus, skin, pancreas, testis, colon, kidney, liver, brain and lung (PubMed:9155056). Also found in high-grade lymphomas, squamous cell lung tumors and seminomas (PubMed:9155056) |

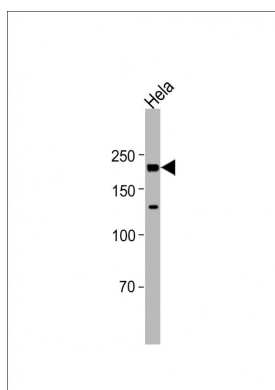
Background

TOP2A encodes a DNA topoisomerase, an enzyme that controls and alters the topologic states of DNA during transcription. This nuclear enzyme is involved in processes such as chromosome condensation, chromatid separation, and the relief of torsional stress that occurs during DNA transcription and replication. It catalyzes the transient breaking and rejoining of two strands of duplex DNA which allows the strands to pass through one another, thus altering the topology of DNA.

References

Kawamura,R., et.al, J. Cell Biol. 188 (5), 653-663 (2010)
 Alchanati,I., et.al, PLoS ONE 4 (12), E8104 (2009)

Images



All lanes : Anti-TOP2A Antibody (C-term) at 1:2000 dilution+ HeLa whole cell lysate Lysates/proteins at 20 µg per lane. Secondary Goat Anti-Rabbit IgG, (H+L), Peroxidase conjugated (ASP1615) at 1/15000 dilution. Observed band size : 180kDa Blocking/Dilution buffer: 5% NFDM/TBST.

Citations

- [Ciprofloxacin impairs mitochondrial DNA replication initiation through inhibition of Topoisomerase 2.](#)

Please note: All products are 'FOR RESEARCH USE ONLY. NOT FOR USE IN DIAGNOSTIC OR THERAPEUTIC PROCEDURES'.