

PDLIM1 Antibody

Rabbit mAb

Catalog # AP92493

Product Information

Application	WB, IF, FC, ICC, IP
Primary Accession	O00151
Reactivity	Rat, Human, Mouse
Clonality	Monoclonal
Other Names	CLIM1; CLP36; Elfin; Enigma; hCLIM1; Pdlim1;
Isotype	Rabbit IgG
Host	Rabbit
Calculated MW	36072

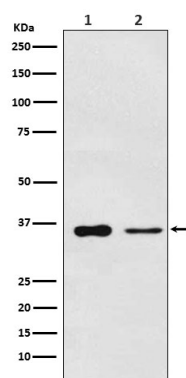
Additional Information

Dilution	WB 1:500~1:2000 ICC/IF 1:50~1:200 IP 1:50 FC 1:100
Purification	Affinity-chromatography
Immunogen	A synthesized peptide derived from human PDLIM1
Description	Cytoskeletal protein that may act as an adapter that brings other proteins (like kinases) to the cytoskeleton.
Storage Condition and Buffer	Rabbit IgG in phosphate buffered saline , pH 7.4, 150mM NaCl, 0.02% sodium azide and 50% glycerol. Store at +4°C short term. Store at -20°C long term. Avoid freeze / thaw cycle.

Protein Information

Name	PDLIM1
Synonyms	CLIM1, CLP36
Function	Cytoskeletal protein that may act as an adapter that brings other proteins (like kinases) to the cytoskeleton (PubMed: 10861853). Involved in assembly, disassembly and directioning of stress fibers in fibroblasts. Required for the localization of ACTN1 and PALLD to stress fibers. Required for cell migration and in maintaining cell polarity of fibroblasts (By similarity).
Cellular Location	Cytoplasm. Cytoplasm, cytoskeleton. Cytoplasm, myofibril, sarcomere, Z line Note=Associates with actin stress fibers
Tissue Location	Strongly expressed in the heart and skeletal muscle, moderately expressed in the spleen, small intestine, colon, placenta, and lung. A lower level expression is seen in liver, thymus, kidney, prostate and pancreas and is not found in the brain, testis, ovary, and peripheral blood leukocytes

Images



Western blot analysis of PDLIM1 expression in (1) Saos2 cell lysate; (2) Mouse lung lysate.

Please note: All products are 'FOR RESEARCH USE ONLY. NOT FOR USE IN DIAGNOSTIC OR THERAPEUTIC PROCEDURES'.