

# ESRRG Antibody

Rabbit mAb

Catalog # AP92510

## Product Information

---

<b>Application</b>	WB
<b>Primary Accession</b>	<a href="#">P62508</a>
<b>Reactivity</b>	Rat, Human, Mouse
<b>Clonality</b>	Monoclonal
<b>Other Names</b>	ERR 3; ERR gamma 2; ERR3; ERRG2; ERRgamma; ESRRG; NR3B3;
<b>Isotype</b>	Rabbit IgG
<b>Host</b>	Rabbit
<b>Calculated MW</b>	51306

## Additional Information

---

<b>Dilution</b>	WB 1:500~1:2000
<b>Purification</b>	Affinity-chromatography
<b>Immunogen</b>	A synthesized peptide derived from human ESRRG
<b>Description</b>	Orphan receptor that acts as transcription activator in the absence of bound ligand. Binds specifically to an estrogen response element and activates reporter genes controlled by estrogen response elements.
<b>Storage Condition and Buffer</b>	Rabbit IgG in phosphate buffered saline , pH 7.4, 150mM NaCl, 0.02% sodium azide and 50% glycerol. Store at +4°C short term. Store at -20°C long term. Avoid freeze / thaw cycle.

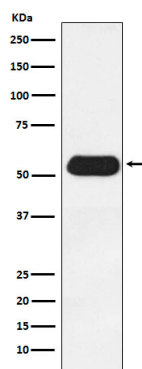
## Protein Information

---

<b>Name</b>	ESRRG
<b>Synonyms</b>	ERR3, ERRG2, KIAA0832, NR3B3
<b>Function</b>	Orphan receptor that acts as a transcription activator in the absence of bound ligand. Binds specifically to an estrogen response element and activates reporter genes controlled by estrogen response elements (By similarity). Induces the expression of PERM1 in the skeletal muscle.
<b>Cellular Location</b>	Nucleus.
<b>Tissue Location</b>	Expressed in the heart, kidney, brain, lung, bone marrow, adrenal gland, trachea, spinal cord and thyroid gland

## Images

---



Western blot analysis of Estrogen Related Receptor gamma expression in Human fetal heart lysate.

Please note: All products are 'FOR RESEARCH USE ONLY. NOT FOR USE IN DIAGNOSTIC OR THERAPEUTIC PROCEDURES'.