

TCF4 Antibody

Rabbit mAb

Catalog # AP92512

Product Information

Application	WB, IHC, FC, IP
Primary Accession	P15884
Reactivity	Human
Clonality	Monoclonal
Other Names	E2-2; ITF2; PTHS; SEF2; ITF-2; SEF-2; TCF-4; SEF2-1; SEF2-1A; SEF2-1B; bHLHb19;
Isotype	Rabbit IgG
Host	Rabbit
Calculated MW	71308

Additional Information

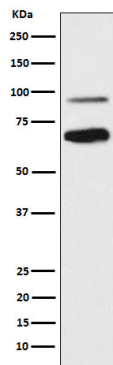
Dilution	WB 1:500~1:2000 IHC 1:50~1:200 FC 1:80 ChIP
Purification	Affinity-chromatography
Immunogen	A synthesized peptide derived from human TCF4
Description	Transcription factor that binds to the immunoglobulin enhancer Mu-E5/KE5-motif. Binds to the E-box present in the somatostatin receptor 2 initiator element (SSTR2-INR) to activate transcription (By similarity). Preferentially binds to either 5'-ACANNTGT-3' or 5'-CCANNTGG-3'.
Storage Condition and Buffer	Rabbit IgG in phosphate buffered saline , pH 7.4, 150mM NaCl, 0.02% sodium azide and 50% glycerol. Store at +4°C short term. Store at -20°C long term. Avoid freeze / thaw cycle.

Protein Information

Name	TCF4
Synonyms	BHLHB19, ITF2, SEF2
Function	Transcription factor that binds to the immunoglobulin enhancer Mu-E5/KE5-motif. Involved in the initiation of neuronal differentiation. Activates transcription by binding to the E box (5'- CANNTG-3'). Binds to the E-box present in the somatostatin receptor 2 initiator element (SSTR2-INR) to activate transcription (By similarity). Preferentially binds to either 5'-ACANNTGT-3' or 5'- CCANNTGG-3'.
Cellular Location	Nucleus {ECO:0000255 PROSITE-ProRule:PRU00981, ECO:0000269 PubMed:22777675}
Tissue Location	Expressed in adult heart, brain, placenta, skeletal muscle and to a lesser extent in the lung. In developing embryonic tissues, expression mostly occurs

in the brain

Images



Western blot analysis of TCF4 expression in SH-SY5Y cell lysate.

Please note: All products are 'FOR RESEARCH USE ONLY. NOT FOR USE IN DIAGNOSTIC OR THERAPEUTIC PROCEDURES'.