

# GLB1 Antibody

Rabbit mAb

Catalog # AP92515

## Product Information

---

<b>Application</b>	WB, FC
<b>Primary Accession</b>	<a href="#">P16278</a>
<b>Reactivity</b>	Rat, Human, Mouse
<b>Clonality</b>	Monoclonal
<b>Other Names</b>	EBP; ELNR1; Galactosidase beta 1; GLB1; Lactase; MPS4B;
<b>Isotype</b>	Rabbit IgG
<b>Host</b>	Rabbit
<b>Calculated MW</b>	76075

## Additional Information

---

<b>Dilution</b>	WB 1:1000~1:5000 FC 1:50
<b>Purification</b>	Affinity-chromatography
<b>Immunogen</b>	A synthesized peptide derived from human GLB1
<b>Description</b>	Cleaves beta-linked terminal galactosyl residues from gangliosides, glycoproteins, and glycosaminoglycans.
<b>Storage Condition and Buffer</b>	Rabbit IgG in phosphate buffered saline , pH 7.4, 150mM NaCl, 0.02% sodium azide and 50% glycerol. Store at +4°C short term. Store at -20°C long term. Avoid freeze / thaw cycle.

## Protein Information

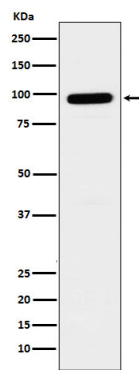
---

<b>Name</b>	GLB1
<b>Synonyms</b>	ELNR1
<b>Function</b>	[Isoform 1]: Cleaves beta-linked terminal galactosyl residues from gangliosides, glycoproteins, and glycosaminoglycans.
<b>Cellular Location</b>	[Isoform 1]: Lysosome
<b>Tissue Location</b>	Detected in placenta (at protein level) (PubMed:8383699). Detected in fibroblasts and testis (PubMed:2511208)

## Images

---

Western blot analysis of GLB1 expression in SH-SY5Y cell lysate.



Please note: All products are 'FOR RESEARCH USE ONLY. NOT FOR USE IN DIAGNOSTIC OR THERAPEUTIC PROCEDURES'.