

# RhoGAP Antibody

Rabbit mAb

Catalog # AP92516

## Product Information

<b>Application</b>	WB, IHC, FC
<b>Primary Accession</b>	<a href="#">Q13017</a>
<b>Reactivity</b>	Rat, Human, Mouse
<b>Clonality</b>	Monoclonal
<b>Other Names</b>	ARHGAP5; p190 B; p190 RhoGAP; Rho GTPase activating protein 5; RhoGAP; RhoGAP5;
<b>Isotype</b>	Rabbit IgG
<b>Host</b>	Rabbit
<b>Calculated MW</b>	172460

## Additional Information

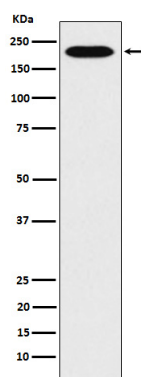
<b>Dilution</b>	WB 1:500~1:2000 IHC 1:50~1:200 FC 1:50
<b>Purification</b>	Affinity-chromatography
<b>Immunogen</b>	A synthesized peptide derived from human RhoGAP
<b>Description</b>	GTPase-activating protein for Rho family members (PubMed:8537347).
<b>Storage Condition and Buffer</b>	Rabbit IgG in phosphate buffered saline , pH 7.4, 150mM NaCl, 0.02% sodium azide and 50% glycerol. Store at +4°C short term. Store at -20°C long term. Avoid freeze / thaw cycle.

## Protein Information

<b>Name</b>	ARHGAP5
<b>Synonyms</b>	RHOGAP5
<b>Function</b>	GTPase-activating protein for Rho family members (PubMed: <a href="#">8537347</a> ).
<b>Cellular Location</b>	Cytoplasm. Cell membrane; Peripheral membrane protein. Note=Also membrane-associated in a fibrillar pattern that colocalizes with the alpha5-beta1 integrin receptor (ITGA5/ITGB1) for fibronectin.
<b>Tissue Location</b>	Detected in skin fibroblasts (at protein level) (PubMed:8537347).

## Images

Western blot analysis of RhoGAP expression in Hela cell lysate.



Please note: All products are 'FOR RESEARCH USE ONLY. NOT FOR USE IN DIAGNOSTIC OR THERAPEUTIC PROCEDURES'.