

PI 3 Kinase R4 Antibody

Rabbit mAb

Catalog # AP92517

Product Information

Application	WB, IHC, IF, FC, ICC, IHF
Primary Accession	Q99570
Reactivity	Rat, Human, Mouse
Clonality	Monoclonal
Other Names	P150; Phosphoinositide 3 kinase regulatory subunit 4; PI3 kinase p150 subunit; PIK3R4; VPS15;
Isotype	Rabbit IgG
Host	Rabbit
Calculated MW	153103

Additional Information

Dilution	WB 1:500~1:2000 IHC 1:50~1:200 ICC/IF 1:50~1:200 FC 1:50
Purification	Affinity-chromatography
Immunogen	A synthesized peptide derived from human PI 3 Kinase R4
Description	Regulatory subunit of the PI3K complex. May regulate membrane trafficking late in the endocytic pathway.
Storage Condition and Buffer	Rabbit IgG in phosphate buffered saline , pH 7.4, 150mM NaCl, 0.02% sodium azide and 50% glycerol. Store at +4°C short term. Store at -20°C long term. Avoid freeze / thaw cycle.

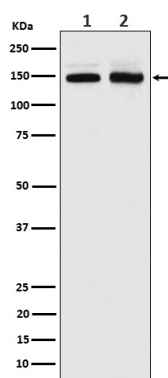
Protein Information

Name	PIK3R4
Synonyms	VPS15 {ECO:0000303 PubMed:23878393}
Function	Regulatory subunit of the PI3K complex that mediates formation of phosphatidylinositol 3-phosphate; different complex forms are believed to play a role in multiple membrane trafficking pathways: PI3KC3-C1 is involved in initiation of autophagosomes and PI3KC3-C2 in maturation of autophagosomes and endocytosis. Involved in regulation of degradative endocytic trafficking and cytokinesis, probably in the context of PI3KC3-C2 (PubMed: 20643123).
Cellular Location	Late endosome. Cytoplasmic vesicle, autophagosome. Membrane; Lipid-anchor. Note=As component of the PI3K complex I localized to pre-autophagosome structures. As component of the PI3K complex II localized predominantly to endosomes. Localizes also to discrete punctae along the ciliary axoneme (By similarity) {ECO:0000250 UniProtKB:Q8VD65, ECO:0000305}

Tissue Location

Ubiquitously expressed.

Images



Western blot analysis of PI 3 Kinase R4 expression in (1) Jurkat cell lysate; (2) Molt-4 cell lysate.

Please note: All products are 'FOR RESEARCH USE ONLY. NOT FOR USE IN DIAGNOSTIC OR THERAPEUTIC PROCEDURES'.