

DOCK2 Antibody

Rabbit mAb

Catalog # AP92518

Product Information

Application	WB, IHC
Primary Accession	Q92608
Reactivity	Human
Clonality	Monoclonal
Other Names	DOCK 2; IMD40;

Isotype	Rabbit IgG
Host	Rabbit
Calculated MW	211948

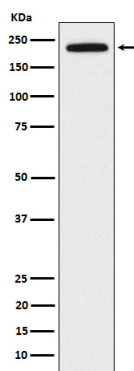
Additional Information

Dilution	WB 1:500~1:2000 IHC 1:50~1:200
Purification	Affinity-chromatography
Immunogen	A synthesized peptide derived from human DOCK2
Description	Involved in cytoskeletal rearrangements required for lymphocyte migration in response of chemokines. Activates RAC1 and RAC2, but not CDC42, by functioning as a guanine nucleotide exchange factor (GEF), which exchanges bound GDP for free GTP.
Storage Condition and Buffer	Rabbit IgG in phosphate buffered saline , pH 7.4, 150mM NaCl, 0.02% sodium azide and 50% glycerol. Store at +4°C short term. Store at -20°C long term. Avoid freeze / thaw cycle.

Protein Information

Name	DOCK2
Synonyms	KIAA0209
Function	Involved in cytoskeletal rearrangements required for lymphocyte migration in response of chemokines. Activates RAC1 and RAC2, but not CDC42, by functioning as a guanine nucleotide exchange factor (GEF), which exchanges bound GDP for free GTP. May also participate in IL2 transcriptional activation via the activation of RAC2.
Cellular Location	Endomembrane system; Peripheral membrane protein. Cytoplasm, cytoskeleton. Note=Colocalizes with F-actin
Tissue Location	Specifically expressed in hematopoietic cells. Highly expressed in peripheral blood leukocytes, and expressed at intermediate level in thymus and spleen. Expressed at very low level in the small intestine and colon.

Images



Western blot analysis of DOCK2 expression in Jurkat cell lysate.

Please note: All products are 'FOR RESEARCH USE ONLY. NOT FOR USE IN DIAGNOSTIC OR THERAPEUTIC PROCEDURES'.