

PLAP Antibody

Rabbit mAb

Catalog # AP92526

Product Information

Application	WB, IHC, IF, ICC, IP, IHF
Primary Accession	Q9Y263
Reactivity	Human
Clonality	Monoclonal
Other Names	Glycerophosphatase; PLA2P; Plaa; PLAP;
Isotype	Rabbit IgG
Host	Rabbit
Calculated MW	87157

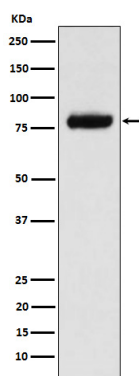
Additional Information

Dilution	WB 1:500~1:2000 IHC 1:50~1:200 ICC/IF 1:50~1:200 IP 1:50
Purification	Affinity-chromatography
Immunogen	A synthesized peptide derived from human PLAP
Description	Involved in the maintenance of ubiquitin levels.
Storage Condition and Buffer	Rabbit IgG in phosphate buffered saline , pH 7.4, 150mM NaCl, 0.02% sodium azide and 50% glycerol. Store at +4°C short term. Store at -20°C long term. Avoid freeze / thaw cycle.

Protein Information

Name	PLAA
Synonyms	PLAP
Function	Plays a role in protein ubiquitination, sorting and degradation through its association with VCP (PubMed: 27753622). Involved in ubiquitin-mediated membrane proteins trafficking to late endosomes in an ESCRT-dependent manner, and hence plays a role in synaptic vesicle recycling (By similarity). May play a role in macroautophagy, regulating for instance the clearance of damaged lysosomes (PubMed: 27753622). Plays a role in cerebellar Purkinje cell development (By similarity). Positively regulates cytosolic and calcium-independent phospholipase A2 activities in a tumor necrosis factor alpha (TNF-alpha)- or lipopolysaccharide (LPS)-dependent manner, and hence prostaglandin E2 biosynthesis (PubMed: 18291623 , PubMed: 28007986).
Cellular Location	Nucleus. Cytoplasm. Synapse {ECO:0000250 UniProtKB:P27612}. Note=Recruited to damaged lysosomes decorated with K48-linked ubiquitin chains

Images



Western blot analysis of PLAP expression in MCF7 cell lysate.

Please note: All products are 'FOR RESEARCH USE ONLY. NOT FOR USE IN DIAGNOSTIC OR THERAPEUTIC PROCEDURES'.