

# ARF5 Antibody

Rabbit mAb

Catalog # AP92527

## Product Information

<b>Application</b>	WB, FC
<b>Primary Accession</b>	<a href="#">P84085</a>
<b>Reactivity</b>	Rat, Human, Mouse
<b>Clonality</b>	Monoclonal
<b>Other Names</b>	ADP ribosylation factor 5; Arf5;
<b>Isotype</b>	Rabbit IgG
<b>Host</b>	Rabbit
<b>Calculated MW</b>	20530

## Additional Information

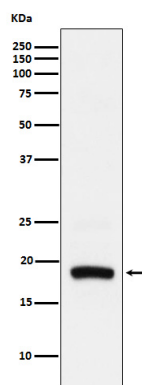
<b>Dilution</b>	WB 1:500~1:2000 FC 1:50
<b>Purification</b>	Affinity-chromatography
<b>Immunogen</b>	A synthesized peptide derived from human ARF5
<b>Description</b>	GTP-binding protein that functions as an allosteric activator of the cholera toxin catalytic subunit, an ADP-ribosyltransferase. Involved in protein trafficking; may modulate vesicle budding and uncoating within the Golgi apparatus.
<b>Storage Condition and Buffer</b>	Rabbit IgG in phosphate buffered saline , pH 7.4, 150mM NaCl, 0.02% sodium azide and 50% glycerol. Store at +4°C short term. Store at -20°C long term. Avoid freeze / thaw cycle.

## Protein Information

<b>Name</b>	ARF5
<b>Function</b>	GTP-binding protein involved in protein trafficking; may modulate vesicle budding and uncoating within the Golgi apparatus.
<b>Cellular Location</b>	Golgi apparatus. Cytoplasm, perinuclear region. Membrane; Lipid-anchor. Golgi apparatus, trans-Golgi network membrane {ECO:0000250 UniProtKB:P84084}; Lipid-anchor {ECO:0000250 UniProtKB:P84084}

## Images

Western blot analysis of ARF5 expression in Hela cell lysate.



Please note: All products are 'FOR RESEARCH USE ONLY. NOT FOR USE IN DIAGNOSTIC OR THERAPEUTIC PROCEDURES'.